



▲ Model 94-3

Primarily used on the discharge of pumps, the Model 94-3 can be used anywhere reverse flow must be prevented and where it is important to control surges when pumps are started and stopped.

SERIES FEATURES

- ▶ Valve opens on pump start and closes on pump shutdown
- ▶ Independently adjustable opening and closing speeds
- ▶ Valve position indicator standard
- ▶ Can be maintained without removal from the line
- ▶ Factory tested

OPERATION

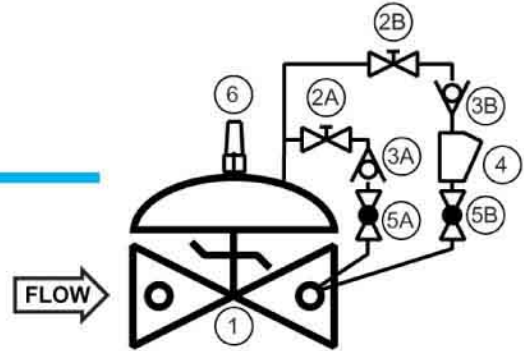
The Model 94-3 is an on/off valve that opens to allow flow when inlet pressure is greater than outlet pressure and closes when outlet is greater than inlet. The opening and closing speed are adjustable via needle valves. The valve is equipped with a position indicator that allows you to observe the rate of opening and closing during adjustment. Opening and closing are accomplished by routing fluid into and out of the diaphragm chamber.

COMPONENTS

The Model 94-3 consists of the following components, arranged as shown on the schematic diagram:

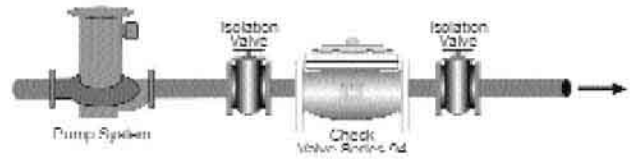
- 1.) Model 65 Basic Control Valve
- 2.) Model 141-2 Needle Valve
- 3.) Model 141-1 Check Valve
- 4.) Model 159 Y-Strainer
- 5.) Model 141-4 Isolation Ball Valve
- 6.) Model 155 Visual Indicator

SCHEMATIC

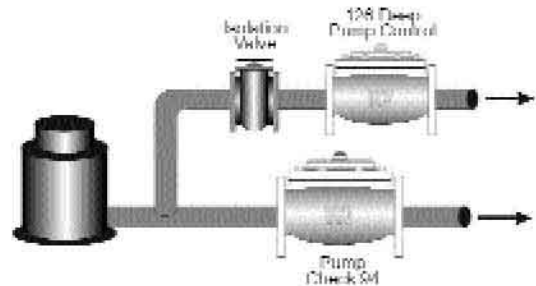


RECOMMENDED INSTALLATION

Equipped with controlled opening and closing speeds, pump discharge pressure is gradually introduced to the system. Pump is protected from reverse flow.



Used in conjunction with the Model 126, the Series 94 provides start up and shutdown surge protection for deep well pumps.



MAX. PRESSURE

END CONNECTIONS	DUCTILE IRON	STEEL/STN STL	BRONZE
Threaded	640 psi	640 psi	500 psi
Grooved	300 psi	300 psi	300 psi
150# Flanged	250 psi	285 psi	225 psi
300# Flanged	640 psi	740 psi	500 psi

SIZING

Check valves are normally line size. However for best surge protection the flow velocity should not exceed 15 ft/sec. Definitive sizing information can be found in the OCV Catalog, Series 94 section and Engineering section Performance Charts. Consult the factory for assistance and a copy of the OCV ValveMaster Sizing program.

SIZE	1 1/4"-1 1/2"	2"	2 1/2"	3"	4"	6"	8"	10"	12"	14"	16"	24"
FLOW @ 15FT/SEC GPM	70 - 95	150	225	345	600	1350	2350	3675	5250	6300	8250	18750

TOLL FREE 1.888.628.8258 • phone: (918)627.1942 • fax: (918)622.8916 • 7400 East 42nd Place, Tulsa, Ok 74145
 email: sales@controlvalves.com • website: www.controlvalves.com

