

▲ Model 118-3 shown

The OCV Series 118/108SA surge anticipation valves are designed to be installed in a bypass line and provide protection against damaging surges that can occur in pumping systems when a pump is suddenly stopped. Unlike conventional relief valves, which open only when a high pressure wave hits, surge anticipation valves sense the precursor of the high pressure wave (pump power failure or low pressure wave) and opens in anticipation of the returning high pressure wave that follows. By opening, the valve prevents the buildup of pressure before it occurs.

SERIES FEATURES

Electro-hydraulic Series 118

- ▶ Electrical power connection to pumping system for opening on loss of power or on a pressure switch low pressure signal.
- ▶ Valve closes after (adjustable) predetermined time on power failure or low pressure opening.
- ▶ Hydraulic, pilot operated, high pressure relief opening.
- ▶ Available with Surge Commander electronics package (Model 118-4).

Hydraulic Model 108SA-3

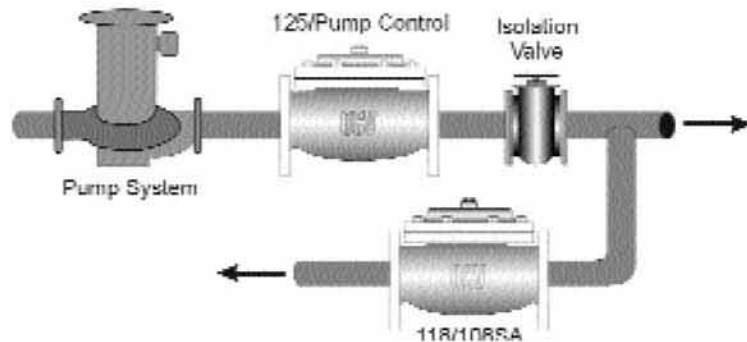
- ▶ No electrical requirements.
- ▶ Low pressure opening pilot.
- ▶ High pressure relief pilot.

VALVE FEATURES

- ▶ Operates automatically off line pressure.
- ▶ Heavy-duty, nylon-reinforced diaphragm.
- ▶ Rectangular-shaped, soft seat seal provides drip-tight Class VI closure.
- ▶ Diaphragm assembly guided top and bottom.
- ▶ Throttling seat retainer for flow and pressure stability.
- ▶ Easily maintained without removal from the line.
- ▶ Replaceable seat ring.
- ▶ Alignment pins assure proper reassembly after maintenance.
- ▶ Valves are factory tested.
- ▶ Valves are serial numbered and registered to facilitate replacement parts and factory support.

APPLICATION STATEMENTS

Installed in the bypass line the valve discharges to atmosphere. Valve opens on power failure, low pressure signal or as a high pressure relief valve.



VALVE OPERATION

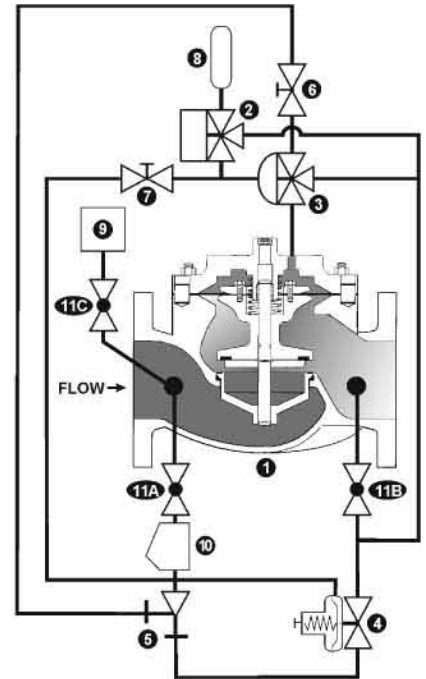
Electro Hydraulic Model 118-3

The control of the model 118-3 is via a three-way solenoid. This solenoid may be electrically interlocked to either the pump power or pump starter. If wired to the pump starter, the valve will automatically proceed in the opening cycle on each pump shutdown. Wired across pump power it opens only on pump power failure.

Valve opens when solenoid is deenergized - either directly on power failure or through pressure switch on low pressure - remains open for a predetermined time (accumulator fill), then slowly closes.

Valve also opens when set point of relief pilot is exceeded, then slowly closes when pressure returns to normal.

ITEM	DESCRIPTION
1	BASIC VALVE ASSEMBLY
2	THREE-WAY SOLENOID PILOT
3	THREE-WAY AUXILIARY PILOT
4	PRESSURE RELIEF PILOT
5	F.F.FCTOR
6	FLOW CONTROL VALVE
7	METERING VALVE
8	ACCUMULATOR
9	PRESSURE SWITCH
10	Y-STRAINER
11	ISOLATION BALL VALVE



Electro Hydraulic Model 118-4

The model 118-4, provides the basic functions of the Model 118-3. The electronic Surge Commander, is a self-powered module, designed with two selectable modes of operation allowing for finer tuning of the variables of when to open and how long to stay open.

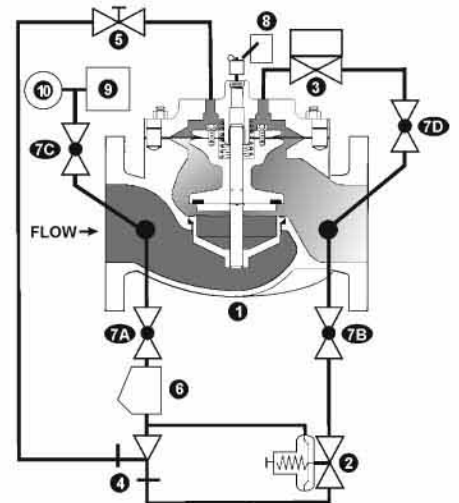
Mode A - Opens valve when there is a power failure during pump run accompanied by a down surge in pressure.

Mode B - Opens valve when there is a power failure or when there is a down surge in pressure.

Both modes prevent unnecessary valve opening caused by power interruptions with no pump running. The time the valve remains open a precise time and is easily adjustable via a digital timer.

The valve also opens when set point of the high pressure relief pilot is exceeded, then slowly closes when pressure returns to normal.

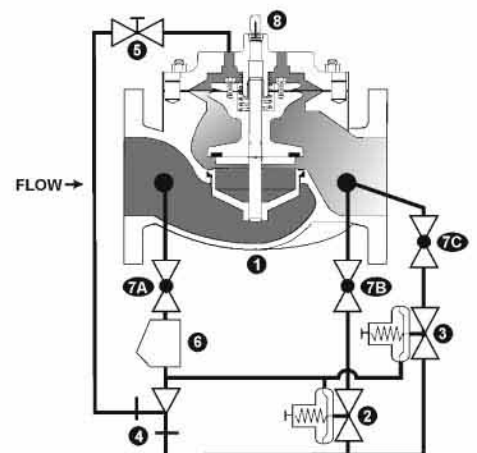
ITEM	DESCRIPTION
1	BASIC VALVE ASSEMBLY
2	PRESSURE RELIEF PILOT
3	TWO-WAY SOLENOID PILOT, N.C
4	F.F.FCTOR
5	FLOW CONTROL VALVE
6	Y-STRAINER
7	ISOLATION BALL VALVE
8	LOW PRESSURE OPENING PILOT
9	LOW PRESSURE SWITCH ASSEMBLY
10	PRESSURE GAUGE



Hydraulic Model 108-SA-3

The control of the model 108SA-3 is via two hydraulic control pilots. A normally open, low pressure pilot that opens the valve when system pressure drops to its set point. This setting is typically 25 psi less than static pressure. The valve also opens when set point of the high pressure relief pilot is exceeded. The valve slowly closes when system pressure returns to normal (pressure is between the settings of the two pilots).

ITEM	DESCRIPTION
1	BASIC VALVE ASSEMBLY
2	PRESSURE RELIEF PILOT
3	LOW PRESSURE OPENING PILOT
4	F.F.FCTOR
5	FLOW CONTROL VALVE
6	Y-STRAINER
7	ISOLATION BALL VALVE
8	VISUAL INDICATOR



SIZING CONSIDERATIONS

For the most comprehensive procedure in sizing Series 118/108SA control valves, it is best to use our ValveMaster software or the guidelines shown here in conjunction with the Performance Charts in the Engineering Section of the OCV catalog.

The flow required through a surge anticipation valve can be difficult to determine, so a general guideline is to use 60% of the rated pump flow. The 118/108SA Series valve is capable of intermittent flows up to 45 ft. per second. Surge Anticipation Valve sizes are typically 50-60% of the mainline size.

$$C_v = \frac{Q_{\max}}{\sqrt{DP/sg}}$$

where Q_{\max} = maximum flow rate, gallons per minute
 DP = pressure drop, psi*
 sg = liquid specific gravity (water = 1.00)

* For valves which exhaust to atmosphere, the DP will be numerically equal to the low pressure setting.

From the chart below, pick the smallest valve that has at least the Cv determined above, and where the velocity does not exceed 45 ft/sec.

Flow chart for full port valve.

Valve size	1 ¼	1 ½	2	2 ½	3	4	6	8	10	12	14	16	24
GLOBE Cv	23	27	47	68	120	200	450	760	1250	1940	2200	2850	6900
ANGLE Cv	30	35	65	87	160	270	550	1000	1600	2400	--	4000	--
FLOW @ 45 FT/SEC	210	280	460	650	1000	1800	4000	7000	11,000	16,000	19,000	25,000	56,000

CAVITATION CONCERNS

Many surge anticipation valves are, by their application, subject to pressure differentials that may induce cavitation. When these conditions exist, it may be only on an intermittent basis, causing minimum concern for valve deterioration.

This complex phenomenon cannot be predicted by charts, which index only inlet and outlet pressures. The easiest way to predict cavitation is to let us do the calculation.

Simply fax, e-mail or call us and we will provide a graphical analysis and a solution.

Provide us:

APPLICATION (i.e., surge anticipation)
 VALVE SIZE
 PRESSURE - INLET and OUTLET
 FLOW RANGE - Minimum and Maximum
 FLUID TYPE
 FLUID VAPOR PRESSURE (if other than water)

VALVE SELECTION GUIDE

Feature	118-2	118-3	118-4	108SA3	Description
Power Failure Opening	X	X	X		Valve opens on loss of power
Low Pressure Opening		X	X	X	Valve opens on low pressure (below normal)
High Pressure Relief	X	X	X	X	Valve opens at high pressure setting (hydraulic pilot)
Electronic Control With Surge Commander Control Panel			X		Simple, accurate control of power failure and low pressure opening modes

SURGE COMMANDER--Used with Model 118-4
 Enclosure: NEMA 4X (weather tight & corrosion resistant)
 Dimensions: 17 1/2" High x 14" Wide x 8 3/4" Deep
 Input Power: 120VAC
 Output Power: 12VDC from internal battery/charger



ABOUT YOUR VALVE

OCV Control Valves was founded more than 50 years ago with a vision and commitment to quality and reliability. From modest beginnings, the company has grown to be a global leader just a half century later. In fact, OCV Valves can be found in some capacity in nearly every country around the world from fire protection systems in Malaysia to aircraft fueling systems in Africa and from oil refineries in Russia to water supply systems in the USA and Canada. You will also find our valves in irrigation systems in Europe, South America and the Middle East.

The original foundation on which the company was built allows our team of professionals to not only provide the service required to be a worldwide supplier, but more importantly the opportunity to afford the personal touch necessary to be each of our customers' best partner. Simply stated, we take pride in all that we do.

Committed to the work they do, our employees average over 15 years of service. This wealth of knowledge allows us to provide quality engineering, expert support, exacting control and the know-how to create valves known for their long life.

Being ISO 9001 certified means we are committed to a quality assurance program. Our policy is to supply each customer with consistent quality products and ensure that the process is right every time. Our valves meet and exceed industry standards around the world, including approvals by:



All valves are not created equal. OCV Control Valves proves that day in and day out. We stand behind our valves and are ready to serve your needs.

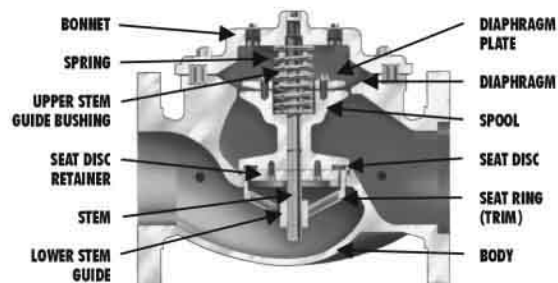
TOLL FREE 1.888.628.8258 • phone: (918)627.1942 • fax: (918)622.8916 • 7400 East 42nd Place, Tulsa, OK 74145
 email: sales@controlvalves.com • website: www.controlvalves.com

Global performance. Personal touch.

SPECIFICATIONS

VALVE BODY & BONNET	DUCTILE IRON		CAST STEEL		CAST BRONZE		STAINLESS STEEL	
Material Specifications	ASTM A536 (epoxy coated)		ASTM A216/WCB (epoxy coated)		ASTM B61		ASTM A743/CF8M	
END CONNECTIONS								
Flange Standard (also available in metric)	ANSI B16.42		ANSI B16.5		ANSI B16.24		ANSI B16.5	
Flange Class	150#	300#	150#	300#	150#	300#	150#	300#
Flange Face	Flat	Raised	Raised	Raised	Flat	Flat	Raised	Raised
Maximum Working Pressure	250 psi	640 psi	285 psi	740 psi	225 psi	500 psi	285 psi	740 psi
Screwed Working Pressure:	ANSI B1.20.1 (B2.1) 640 psi (Bronze 500 psi)		Grooved End Working Pressure:		300 psi			
INTERNALS								
Stem	STAINLESS STEEL AISI 303				OPTIONAL MONEL			
Spring	STAINLESS STEEL AISI 302							
Spool	DUCTILE IRON ASTM A536 (epoxy coated)				B-61		STN. STL. ASTM A 743/CF8M	
Seat Disc Retainer	DUCTILE IRON ASTM A536 (epoxy coated) 4" & SMALLER VALVES - STAINLESS STEEL				B-61		STAINLESS STEEL	
Diaphragm Plate	DUCTILE IRON ASTM A536 (epoxy coated)				B-61		STAINLESS STEEL	
Seat Ring (Trim)	BRONZE B61 OPTIONAL STAINLESS STEEL ASTM A743/CF8M						STN. STL. ASTM A 743/CF8M	
Upper Stem Bushing	STANDARD BRONZE ASTM B438		VALVE W/ STAINLESS STEEL SEAT RING-TEFLON			TEFLON		
Lower Stem Bushing	SEAT MATERIAL VALVES W/ STAINLESS STEEL SEAT RING-TEFLON					TEFLON		
ELASTOMER PARTS (Rubber)								
Diaphragm/Seat Disc/O-Rings	STANDARD - BUNA-N NYLON REINFORCED				OPTIONAL - VITON®		OPTIONAL - EPDM	
Operating Temperature	-40°F to 180°F				32°F to 400°F		0°F to 300°F	
COATINGS WIDE RANGE OF COATING PER YOUR FLUID APPLICATION. COATINGS HANDLE MUNICIPAL POTABLE WATER, SEAWATER, PETROLEUM AND REFINED PRODUCTS.								
ELECTRICAL SOLENOIDS								
Bodies	STANDARD BRASS				STAINLESS STEEL (OPTIONAL)			
Elastomers	STANDARD - BUNA-N NYLON REINFORCED				OPTIONAL - VITON®			
Enclosures	WATER TIGHT, NEMA 1, 3, 4, & 4X - EXPLOSION PROOF - OPTIONAL (NEMA 7 & 9)							
Power	AC, 60HZ - 24, 120, 240, 480 VOLTS		AC, 50HZ - In 110 VOLT MULTIPLES		DC, 6, 12, 24, 240 VOLTS			
Operation	ENERGIZE TO OPEN (NORMALLY CLOSED)				DE-ENERGIZE TO OPEN (NORMALLY OPEN)			
CONTROL PILOTS								
Bodies	BRONZE B61		STAINLESS STEEL ASTM A743/CF8M					
Internal	AISI 303							
CONTROL CIRCUITS								
Tubing	COPPER OR STAINLESS STEEL							
Fittings	BRASS OR STAINLESS STEEL							

VITON® is a registered trademark of DuPont Dow Elastomers.



SALTWATER SERVICE VALVE MATERIALS

Cast Steel Special Coatings --Ni Aluminum Bronze ASTM B148 --Super Duplex Stainless Steel



Globe Flanged Sizes

1.25"	1.5"	2"	2.5"	3"	4"	6"	8"	10"	12"	14"	16"	18"	20"	24"
32mm	40mm	50mm	65mm	80mm	100mm	150mm	200mm	250mm	300mm	350mm	400mm	450mm	500mm	600mm

*CONSULT FACTORY



Angle Flanged Sizes

1.25"	1.5"	2"	2.5"	3"	4"	6"	8"	10"	12"	16"
32mm	40mm	50mm	65mm	80mm	100mm	150mm	200mm	250mm	300mm	400mm



Globe/Angle Screwed Sizes

1.25"	1.5"	2"	2.5"	3"
32mm	40mm	50mm	65mm	80mm



Globe/Angle Grooved Sizes

1.5"	2"	2.5"	3"	4"
32mm	50mm	65mm	80mm	100mm

TOLL FREE 1.888.628.8258 • phone: (918)627.1942 • fax: (918)622.8916 • 7400 East 42nd Place, Tulsa, OK 74145
 email: sales@controlvalves.com • website: www.controlvalves.com

