



Model 3331 ▲

The Model 3331 is applicable anywhere it is necessary to automatically maintain the water level in elevated storage tanks or reservoirs. Such applications occur in:

- Municipal water
- Rural water
- Industrial plants
- Fire protection systems

SERIES FEATURES

- ▶ Automatic tank fill and shut-off without the use of floats or sensors
- ▶ Accurate shut-off to within inches of set point
- ▶ High level point adjustable with single screw
- ▶ Exhaust-to-atmosphere operation allows minimum pressure loss
- ▶ Can be maintained without removal from the line
- ▶ Adjustable response speed
- ▶ Factory tested and can be pre-set to your requirements

OPERATION

The model 3331 is designed for tank fill only, with discharge from the tank by a separate line or by-pass. Tank head (pressure) is sensed under the diaphragm of the altitude pilot. When tank head falls below the set point (spring setting), the pilot shifts to vent water from the diaphragm chamber of the main valve. This allows the valve to open and fill the tank. When the tank level reaches the set point, the altitude pilot shifts to apply full inlet pressure to the diaphragm of the main valve, forcing the valve fully closed.

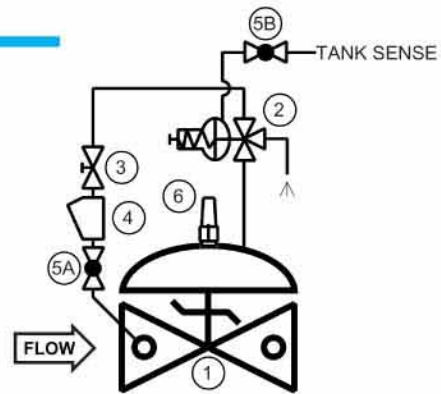
On 8" and smaller valves, the altitude pilot operates the main valve directly. On 10" and larger valves, the altitude pilot operates the main valve through a high-capacity three-way auxiliary pilot for more positive response.

COMPONENTS

The Model 3331 consists of the following components, arranged as shown on the schematic diagram:

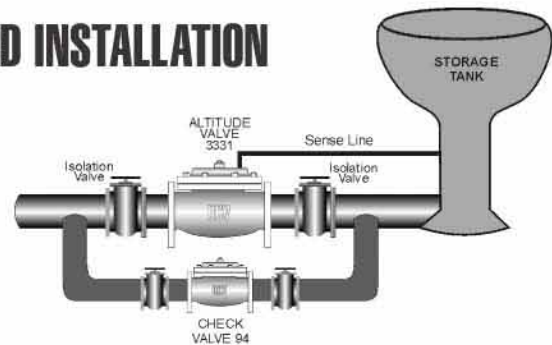
- 1.) Model 65 Basic Control Valve
- 2.) Model 3300 Altitude Pilot
- 3.) Model 141-2 Needle Valve
- 4.) Model 159 Y-strainer
- Protects pilot system from dirt/debris
- 5.) Model 141-4 Isolation Ball Valves
- 6.) Model 155 Visual Indicator

SCHEMATIC



RECOMMENDED INSTALLATION

A sense line must be connected within 40 pipe diameters of the tank wall or riser, minimum size of 1/2" O.D. tubing or 3/8" pipe. In order to prevent accumulation of air, the sense line should slope upwards to the tank. As the 3331 exhausts its diaphragm chamber to atmosphere, the volume varying according to valve size, as shown below. Provisions should be made to drain or otherwise dispose of this water.



1 1/4" - 1 1/2"	0.02 gallons	8"	1.0 gallon
2"	0.05 gallons	10"	2.5 gallons
2 1/2"	0.06 gallons	12"	4.0 gallons
3"	0.1 gallons	14"	6.5 gallons
4"	0.2 gallons	16"	9.6 gallons
6"	0.6 gallons	24"	28.0 gallons

SIZING

While most Model 3331 Altitude Valves are line size, definitive sizing information can be found in the OCV Catalog, Series 3330 section and Engineering section Performance Charts. Consult the factory for assistance and a copy of the OCV ValveMaster Sizing program.

MAX. PRESSURE

END CONNECTIONS	DUCTILE IRON	STEEL/STN STL	BRONZE
Threaded	640 psi	640 psi	500 psi
Grooved	300 psi	300 psi	300 psi
150# Flanged	250 psi	285 psi	225 psi
300# Flanged	640 psi	740 psi	500 psi

TOLL FREE 1.888.628.8258 ● phone: (918)627.1942 ● fax: (918)622.8916 ● 7400 East 42nd Place, Tulsa, Ok 74145
 email: sales@controlvalves.com ● website: www.controlvalves.com

SIZES

GLOBE/ANGLE

Screwed Ends: 2" - 3" Grooved Ends: 2" - 4"
 Flanged Ends: 2" - 24" (globe); 2" - 16" (angle)

TEMPERATURE RANGE (Valve Elastomers)

Buna-N -40° F - 180°F
 Viton 0° F - 400°F
 EPDM 0° F - 300°F

MATERIALS Consult factory for others.

Body/Bonnet: Ductile Iron (epoxy coated), Carbon Steel (epoxy coated), Stainless Steel, B61 Bronze
 Others available (consult factory)

Seat Ring: Bronze B61, Stainless Steel

Stem: Stainless Steel, Monel

Spring: Stainless Steel

Diaphragm: Nylon Reinforced, Buna-N, Viton, EPDM

Seat Disc: Buna-N, Viton, EPDM

Pilot: Bronze, Stainless Steel

Other pilot system components: Bronze/Brass, All Stainless Steel

Tubing & Fittings: Copper/Brass, Stainless Steel

Adjustment Ranges:

Altitude Pilot (High Level Closing Point)
 5-30 ft (Green/Blue), 20-50 ft (Green), 40-80 ft (Blue),
 70-140 ft (Red), 130-230 ft (Yellow)

SPECIFICATIONS (Typical Water Application)

The altitude valve shall function to control the level in the tank without the use of floats or probes in the tank itself. It shall be a one-way flow (single-acting) type, designed to open fully to fill the tank and close completely when the predetermined high level is reached. Sensing of the altitude pilot shall be by means of a field-installed sense line between the pilot and the base of the tank. The altitude valve shall be equipped with a visual indicator assembly.

DESIGN

The altitude valve shall be a single-seated, line pressure operated, diaphragm actuated, pilot controlled globe valve. The valve shall seal by means of a corrosion-resistant seat and a resilient, rectangular seat disc. These, and other parts, shall be replaceable without removing the valve from the line. The stem of the main valve shall be guided top and bottom by integral bushings. Alignment of the body, bonnet and diaphragm assembly shall be by precision dowel pins. The diaphragm shall not be used as a seating surface, nor shall the pistons be used as an operating means. The pilot system shall be furnished complete and installed on the main valve. It shall include the altitude pilot, a needle valve, Y-strainer and isolation ball valves. The altitude valve shall be operationally and hydrostatically tested prior to shipment.

MATERIALS OF CONSTRUCTION

The main valve body and bonnet shall be ductile iron per ASTM A536, Grade 65-45-12. All ferrous surfaces shall be coated with 4 mils of epoxy. The main valve seat ring shall be bronze per ASTM B61. Elastomers (diaphragms, resilient seats and O-rings) shall be Buna-N. The altitude pilot shall be bronze per ASTM B61. The needle valve and isolation ball valves shall be brass and control line tubing shall be copper.

OPERATING CONDITIONS

The altitude valve shall be suitable for a flow of <X> gpm, a maximum pressure of <X> psig, and a full tank level of <X> feet.

ACCEPTABLE PRODUCTS

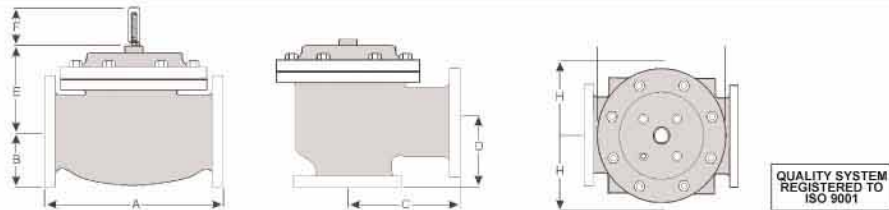
The altitude valve shall be a <size> Model 3331, <globe pattern, angle pattern>, with <150# flanged, 300# flanged, threaded, grooved> end connections, as manufactured by OCV Control Valves, Tulsa, Oklahoma, USA.

U.S. DIMENSIONS - INCHES

DIM	END CONN.	1 1/4-1 1/2	2	2 1/2	3	4	6	8	10	12	14	16	24
A	SCREWED	8 3/4	9 7/8	10 1/2	13	--	--	--	--	--	--	--	--
	GROOVED	8 3/4	9 7/8	10 1/2	13	15 1/4	20	--	--	--	--	--	--
	150# FLGD	8 1/2	9 3/8	10 1/2	12	15	17 3/4	25 3/8	29 3/4	34	39	40 3/8	62
C	300# FLGD	8 3/4	9 7/8	11 1/8	12 3/4	15 5/8	18 5/8	26 3/8	31 1/8	35 1/2	40 1/2	42	63 3/4
	SCREWED	4 3/8	4 3/4	6	6 1/2	--	--	--	--	--	--	--	--
	GROOVED	4 3/8*	4 3/4	6	6 1/2	7 5/8	--	--	--	--	--	--	--
	150# FLGD	4 1/4	4 3/4	6	6	7 1/2	10	12 11/16	14 7/8	17	--	20 13/16	--
D	300# FLGD	4 3/8	5	6 3/8	6 3/8	7 13/16	10 1/2	13 3/16	15 9/16	17 3/4	--	21 5/8	--
	SCREWED	3 1/8	3 7/8	4	4 1/2	--	--	--	--	--	--	--	--
	GROOVED	3 1/8*	3 7/8	4	4 1/2	5 5/8	--	--	--	--	--	--	--
E	150# FLGD	3	3 7/8	4	4	5 1/2	6	8	11 3/8	11	--	15 11/16	--
	300# FLGD	3 1/8	4 1/8	4 3/8	4 3/8	5 13/16	6 1/2	8 1/2	12 1/16	11 3/4	--	16 1/2	--
	ALL	6	6	7	6 1/2	8	10	11 7/8	15 3/8	17	18	19	27
F	ALL	3 7/8	3 7/8	3 7/8	3 7/8	3 7/8	3 7/8	6 3/8	6 3/8	6 3/8	6 3/8	6 3/8	8
H	ALL	10	11	11	11	12	13	14	17	18	20	20	28 1/2

*GROOVED END NOT AVAILABLE IN 1 1/4"

For maximum efficiency, the OCV control valve should be mounted in a piping system so that the valve bonnet (cover) is in the top position. Other positions are acceptable but may not allow the valve to function to its fullest and safest potential. In particular, please consult the factory before installing 8" and larger valves, or any valves with a limit switch, in positions other than described. Space should be taken into consideration when mounting valves and their pilot systems.



A routine inspection & maintenance program should be established and conducted yearly by a qualified technician. Consult our factory @
1-888-628-8258 for parts and service.

How to order your Model 3331 valve

When Ordering please provide:

Fluid to be controlled -Model Number -Size -Globe or Angle -End Connection -Body Material -Trim Material
 Pilot Options -High level Setting or Spring Range
 Special Requirements / Installation Requirements

Represented by:

TOLL FREE 1.888.628.8258 • phone: (918)627.1942 • fax: (918)622.8916 • 7400 East 42nd Place, Tulsa, Oklahoma 74145
 email: sales@controlvalves.com • website: www.controlvalves.com