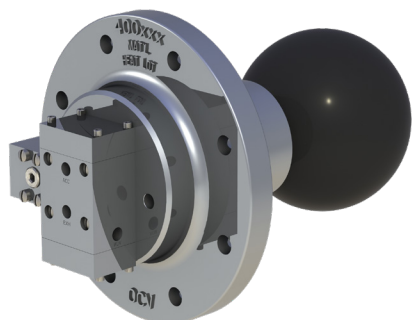




Model 800D-MTW



Float Pilots



General representation



Fueling



Aviation Fueling

Interface Float Pilot – Side Mounted

Description

The OCV 800D-MTW side-mounted filter separator float allows only the discharge of clean, water-free fuel from the filter separator. The three models are as follows:

| Model | Part Number | Flange Material | Pilot/Float Assembly |
|-----------|-------------|----------------------------|----------------------|
| 800D-5MTW | 230751 | Ductile Iron, Epoxy-Coated | Stainless Steel |
| 800D-6MTW | 230753 | Stainless Steel | Stainless Steel |
| 800D-8MTW | 230755 | Aluminum | Stainless Steel |

Certification & Compliance



Features & Benefits

- Ballasted manual tester verifies integrity of float ball
- Side-mount flange fits most brands of filter separators
- Pilot float "rides" the interface between water and fuel
- Four-way control to actuate discharge slug valve and/or automatic water drain valve
- Uses time-proven 800 pilot block (see Model Sheet OCV 800)
- Stainless Steel pilot and float assembly (no red metals)
- Factory tested

Operation

Actuating the manual tester will remove the counterweight from the float arm. This allows the float to rise, confirming the proper operation of the pilot, slug valve, and/or the water drain valve, as well as the integrity of the float ball itself.

The float of the OCV 800D-MTW is counterweighted so that it will float in water, but sink in fuel. Depending on the water level in the filter separator, the OCV 800D-MTW actuates the other control components in the system as follows:

| Float Position | Discharge (Slug) Valve | Water Drain Valve (if equipped) |
|-----------------------|------------------------|---------------------------------|
| Down (no water) | Open | Closed |
| Median (rising water) | Open | Open |
| Up (high water) | Closed | Open |

Maximum Pressure: 100°F / 37.78°C, 300 psi (20.7 bar)

Operating Temperature: 32° - 120°F (0° - 49°C)

Maximum Fuel Specific Gravity: 0.85

