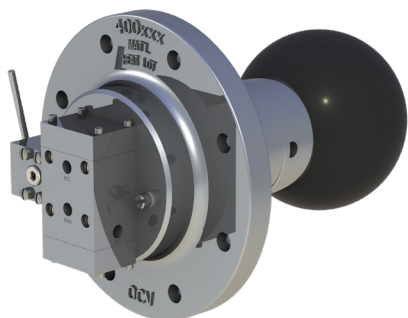


# OCV Model 800D

**Aquestia**  
Directing the Flow

Float Pilots



General representation



Fueling



Aviation  
Fueling

## Interface Float Pilot – Side Mounted

### Description

The OCV 800D side-mounted filter separator float allows only the discharge of clean, water-free fuel from the filter separator. The three models are as follows:

| Model    | Part Number | Flange Material            | Pilot/Float Assembly |
|----------|-------------|----------------------------|----------------------|
| 800D-5MT | 230767      | Ductile Iron, Epoxy-Coated | Stainless Steel      |
| 800D-6MT | 230794      | Stainless Steel            | Stainless Steel      |
| 800D-8MT | 230567      | Aluminum                   | Stainless Steel      |

### Certification & Compliance



### Features & Benefits

- Side-mount flange fits most brands of filter separators
- Pilot float "rides" the interface between water and fuel
- Four-way control to actuate discharge slug valve and/or automatic water drain valve
- Uses time-proven 800 pilot block (see Model Sheet 800)
- Stainless Steel pilot and float assembly (no red metals)
- Manual tester standard
- Factory tested

### Operation

Actuating the manual tester will raise the float to the median or up positions, confirming the proper operation of the pilot, slug valve, and/or the water drain valve.

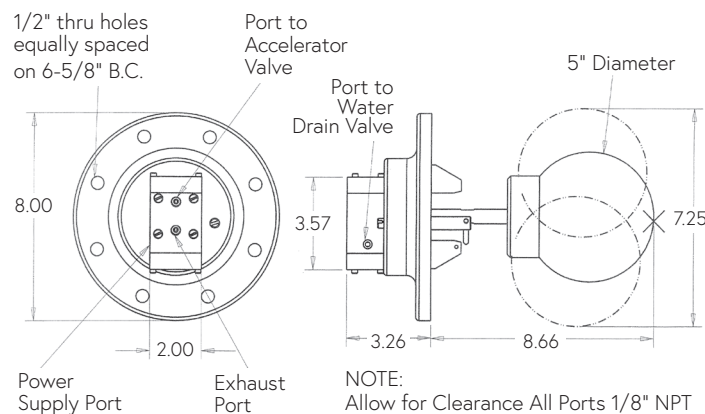
The float of the OCV 800D is counterweighted so that it will float in water, but sink in fuel. Depending on the water level in the filter separator, the OCV 800D actuates the other control components in the system as follows:

| Float Position        | Discharge (Slug) Valve | Water Drain Valve |
|-----------------------|------------------------|-------------------|
| Down (no water)       | Open                   | Closed            |
| Median (rising water) | Open                   | Open              |
| Up (high water)       | Closed                 | Open              |

Maximum Pressure: 100°F / 37.78°C, 300 psi (20.7 bar)

Operating Temperature: 32° - 120°F (0° - 49°C)

Maximum Fuel Specific Gravity: 0.85



Aquestia Ltd. reserves the right to make product changes without prior notice. To ensure receiving updated information on parts specifications, please contact us at [usa@aquestia.com](mailto:usa@aquestia.com). Aquestia Ltd. shall not be held liable for any errors. All rights reserved.

**Aquestia USA**