



Model 127-3MP ▲

The Model 127-3MP has a wide range of applications: anywhere a pressure must be reduced to a manageable level and the system requires frequent set point changes. Typical examples include:

- High rise and commercial buildings
- Pump systems
- Zone pressure control in municipal and industrial water
- Irrigation systems

## SERIES FEATURES

- ▶ Reduces a higher inlet pressure to a lower outlet pressure
- ▶ Constant outlet pressure over wide flow range
- ▶ Pilot-operated main valve not subject to pressure fall off
- ▶ Outlet pressure is remotely adjustable through a SCADA system
- ▶ Can be maintained without removal from the line
- ▶ Adjustable opening/response speed
- ▶ Factory tested and can be pre-set to your requirements
- ▶ The Model 3500 Motorized Pilot Actuator allows the hydraulic pressure reducing pilot to be controlled digitally through a SCADA system for frequent set point changes
- ▶ 3500 Motorized Pilot Actuator operates via a 4-20mA signal

## OPERATION

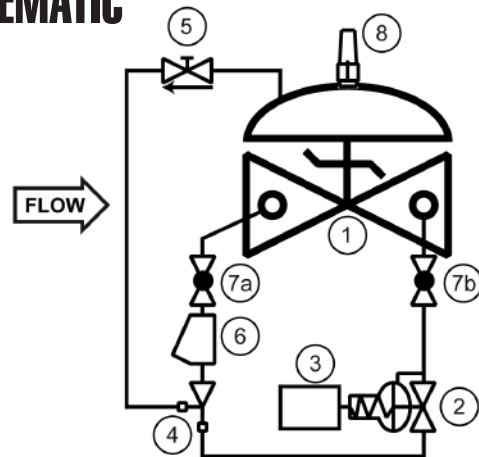
The normally open, spring loaded pilot, sensing downstream pressure, responds to changes in pressure and causes the main valve to do the same. The net result is a constant modulating action of the pilot and main valve to hold the downstream pressure constant. The pilot system is equipped with an opening speed control that fine tunes the valve response to the system variables.

## COMPONENTS

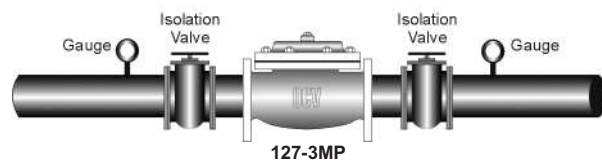
The Model 127-3MP consists of the following components, arranged as shown on the schematic diagram:

- 1.) Model 65 Basic Control Valve
- 2.) Model 1340 Pressure Reducing Pilot
- 3.) Model 3500 Motorized Pilot Actuator
- 4.) Model 126 Ejector -  
Fixed orifice pilot system supply restrictor
- 5.) Model 141-3\* Flow Control Valve -  
Adjustable opening speed control  
\*NOTE: Model 141-2 Needle Valve used on sizes 1-1/4" - 3"
- 6.) Model 159 Y-strainer -  
Protects pilot system from dirt/debris
- 7.) Model 141- 4 Isolation Ball Valves
- 8.) Model 155 Visual Indicator (Optional)

## SCHEMATIC



## RECOMMENDED INSTALLATION



## SIZING

Sizing is a critical issue in the selection of pressure reducing valves. Definitive sizing information can be found in the OCV Catalog, Series 127 section and Engineering section Performance Charts. Consult the factory for assistance and a copy of the OCV ValveMaster Sizing program.

## MAX. PRESSURE

The pressures listed below are maximum pressures at 100°F.

END CONNECTIONS	DUCTILE IRON	STEEL/STN STL	LOW-LEAD BRONZE
Threaded	640 psi	640 psi	500 psi
Grooved	300 psi	300 psi	300 psi
150# Flanged	250 psi	285 psi	225 psi
300# Flanged	640 psi	740 psi	500 psi

**TOLL FREE 1.888.628.8258** • phone: (918)627.1942 • fax: (918)622.8916 • 7400 East 42nd Place, Tulsa, Ok 74145  
email: sales@controlvalves.com • website: www.controlvalves.com

# Model 127-3MP



## SIZES GLOBE/ANGLE

Screwed Ends - 1 1/4" - 3"  
Grooved Ends - 1 1/2" - 6" (globe);  
1-1/2"-4" (angle)  
Flanged Ends - 1 1/4" - 24" (globe);  
1 1/4" - 16" (angle)

## SPRING RANGES (outlet setting)

5-30 psi, 20-80 psi, 20-200 psi, 100-300 psi

## FLUID OPERATING TEMPERATURE RANGE

(Valve Elastomers)

EPDM 32°F - 230°F\*

## MATERIALS

**Body/Bonnet:** Ductile Iron (epoxy coated),  
Carbon Steel (epoxy coated), Stainless Steel,  
Low-Lead Bronze

-Others available (consult factory)

**Seat Ring:** Low-Lead Bronze, Stainless Steel

**Stem:** Stainless Steel, Monel

**Spring:** Stainless Steel

**Diaphragm:** EPDM\*

**Seat Disc:** EPDM\*

**Pilot:** Low-Lead Bronze, Stainless Steel

*Other pilot system components:*

Low-Lead Bronze/Brass -All Stainless Steel

**Tubing & Fittings:** Copper/brass, Stainless Steel

**Motorized Pilot Actuator:** Stainless Steel

\*Others available upon request.

\*\*Valves 1-1/4" through 24" are certified to  
NSF/ANSI 372. Valves 4" through 24" are also  
certified to NSF/ANSI 61-G.

## SPECIFICATIONS (Typical Commercial Plumbing Application)

The pressure reducing valve shall function to reduce a higher upstream pressure to a constant, lower downstream pressure regardless of fluctuations in supply or demand.

### DESIGN

The pressure reducing valve shall be a single-seated, line pressure operated, diaphragm actuated, pilot controlled globe valve. The valve shall seal by means of a corrosion-resistant seat and a resilient, rectangular seat disc. These, and other parts, shall be replaceable without removing the valve from the line. The stem of the main valve shall be guided top and bottom by integral bushings. Alignment of the body, bonnet and diaphragm assembly shall be by precision dowel pins. The diaphragm shall not be used as a seating surface, nor shall pistons be used as an operating means. The pilot system shall be furnished complete and installed on the main valve. It shall include an opening speed control, Y-strainer and isolation ball valves. The pressure reducing valve shall be operationally and hydrostatically tested prior to shipment.

### MATERIALS OF CONSTRUCTION

The main valve body and bonnet shall be ductile iron per ASTM A536, Grade 65-45-12. All ferrous surfaces shall be coated with 4 mils of epoxy. The main valve seat ring shall be low-lead Bronze. Elastomers (diaphragms, resilient seats and O-rings) shall be EPDM. Control pilot shall be low-lead Bronze. The opening speed control and isolation ball valves shall be brass, and control line tubing shall be copper.

### OPERATING CONDITIONS

The pressure reducing valve shall be suitable for reducing inlet pressures of <X to X> psi to a constant outlet pressure of <X> psi at flow rates ranging from <X to X> gpm.

### ACCEPTABLE PRODUCTS

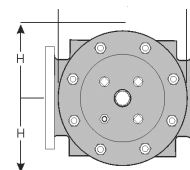
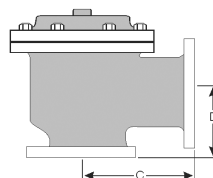
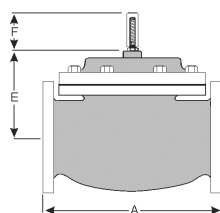
The pressure reducing valve shall be a <size> Model 127-3MP, <globe pattern, angle pattern>, with <150# flanged, 300# flanged, threaded, grooved> end connections, as manufactured by OCV Control Valves, Tulsa, Oklahoma, USA.

U.S. DIMENSIONS - INCHES

DIM	END CONN.	1 1/4-1 1/2	2	2 1/2	3	4	6	8	10	12	14	16	24
A	SCREWED	8 3/4	9 7/8	10 1/2	13	--	--	--	--	--	--	--	--
	GROOVED	8 3/4	9 7/8	10 1/2	13	15 1/4	20	--	--	--	--	--	--
	150# FLGD	8 1/2	9 3/8	10 1/2	12	15	17 3/4	25 3/8	29 3/4	34	39	40 3/8	62
	300# FLGD	8 3/4	9 7/8	11 1/8	12 3/4	15 5/8	18 5/8	26 3/8	31 1/8	35 1/2	40 1/2	42	63 3/4
C ANGLE	SCREWED	4 3/8	4 3/4	6	6 1/2	--	--	--	--	--	--	--	--
	GROOVED	4 3/8*	4 3/4	6	6 1/2	7 5/8	--	--	--	--	--	--	--
	150# FLGD	4 1/4	4 3/4	6	6	7 1/2	10	12 11/16	14 7/8	17	--	20 13/16	--
	300# FLGD	4 3/8	5	6 3/8	6 3/8	7 13/16	10 1/2	13 3/16	15 9/16	17 3/4	--	21 5/8	--
D ANGLE	SCREWED	3 1/8	3 7/8	4	4 1/2	--	--	--	--	--	--	--	--
	GROOVED	3 1/8*	3 7/8	4	4 1/2	5 5/8	--	--	--	--	--	--	--
	150# FLGD	3	3 7/8	4	4	5 1/2	6	8	11 3/8	11	--	15 11/16	--
	300# FLGD	3 1/8	4 1/8	4 3/8	4 3/8	5 13/16	6 1/2	8 1/2	12 1/16	11 3/4	--	16 1/2	--
E	ALL	6	6	7	6 1/2	8	10	11 7/8	15 3/8	17	18	19	27
H	ALL	10	11	11	11	12	13	14	17	18	20	20	28 1/2

\*GROOVED END NOT AVAILABLE IN 1 1/4"

For maximum efficiency, the OCV control valve should be mounted in a piping system so that the valve bonnet (cover) is in the top position. Other positions are acceptable but may not allow the valve to function to its fullest and safest potential. In particular, please consult the factory before installing 8" and larger valves, or any valves with a limit switch, in positions other than described. Space should be taken into consideration when mounting valves and their pilot systems.



QUALITY SYSTEM  
REGISTERED TO  
ISO 9001

A routine inspection & maintenance program should be established and conducted yearly by a qualified technician. Consult our factory @  
**1-888-628-8258** for parts and service.

### How to order your Model 127-3MP valve

When Ordering please provide:

Fluid to be controlled -Model Number -Size

Globe or Angle -End Connection -Body Material

Trim Material -Pilot Options -Pressure Setting or

Spring Range -Special Requirements / Installation requirements.

Represented by:

**TOLL FREE 1.888.628.8258** • phone: (918)627.1942 • fax: (918)622.8916 • 7400 East 42nd Place, Tulsa, Oklahoma 74145  
email: sales@controlvalves.com • website: www.controlvalves.com