



DESCRIPTION

MODEL 1330 PRESSURE RELIEF PILOT / N.C.

- Normally Closed, increasing pressure opens
- Multiple spring ranges for accurate control
- Can be local or remote sensed
- Simple adjustment
- All parts replaceable while mounted on valve
- Rubber to metal seat for positive shut-off
- Bronze or stainless steel construction

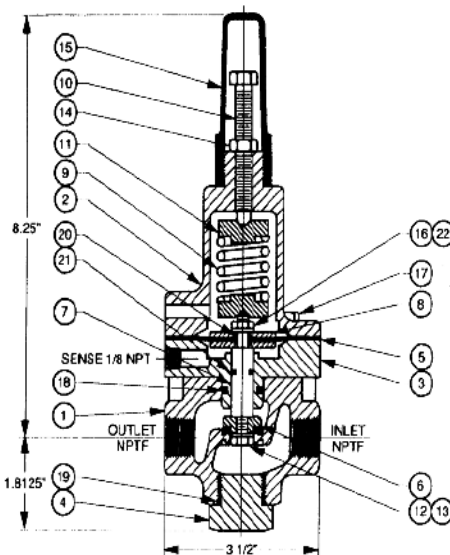
The Model 1330 is a two-way, normally closed pilot, that senses pressure under its diaphragm and balances it against an adjustable spring load. An increase in pressure above the spring set point, tends to make the pilot open.

The Model 1330 is the standard pilot for OCV Series 108 Pressure Relief/Sustaining Valves as well as the Model 108FC Fire Pump Relief Valve. Sensing upstream pressure and opening at the set point, modulates the main valve to maintain the required pressure.

There are other applications for the Model 1330 as a normally closed, pressure to open control.

MODEL 1330 MATRIX

MATERIAL	PART NUMBER	INLET/OUTLET (NPT)	USED ON VALVE SIZE
Bronze, Buna-N	230100	3/8	1 1/4"-6"
Bronze, Buna-N	230108	1/2	8"-16"
Stn. Steel, Buna-N	230700	3/8	1 1/4"-6"
Stn. Steel, Buna-N	230708	1/2	8"-16"



Model 1330 Pressure Relief Pilot:

1. Body
2. Bonnet
3. Adaptor
4. Plug
5. Diaphragm
6. Seat Disc
7. Stem
8. Diaphragm Plate
9. Spring
10. Adjusting Screw
11. Spring Retainer
12. Hex Head Capscrew
13. Lockwasher
14. Hex Nut
15. Cap
16. Hex Nut
17. Hex Head Capscrew
18. O-Ring
19. O-Ring
20. O-Ring
21. O-Ring
22. Lockwasher

SPRING RANGES

PART NUMBER	COLOR	RANGE PSI	RANGE kPa
651701	Green	5 - 30	35 - 210
651703	Red (1 1/4" long)	20 - 80	140 - 560
651000	Red (2" long)	20 - 200	138 - 1379
651702	Blue	100 - 300	700 - 2100

MATERIALS

- Bronze
 Stainless Steel
 Elastomers (diaphragm, seat disc, o-rings)
- Buna-N (Std.)
 - Viton® (Opt.) Viton is a registered trademark of DuPont Dow Elastomers
 - EPDM (Opt.)

MAINTENANCE

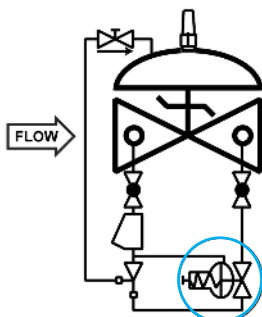
Rubber components are typically the only parts that may require periodic replacement.

These are available in kits consisting of the diaphragm, the seat disc and all O-rings.

Buna-N Kit	-	Part # 930000
Viton® Kit	-	Part # 930100
EPDM Kit	-	Part # 930400

SCHEMATIC SYMBOL

The Model 1330 is shown on OCV Valve Schematics as:



EXAMPLE: Shown here on a MODEL 108-2 Pressure Relief/Sustaining Valve.