



DESCRIPTION

EXTRA-SENSITIVE PRESSURE RELIEF PILOT

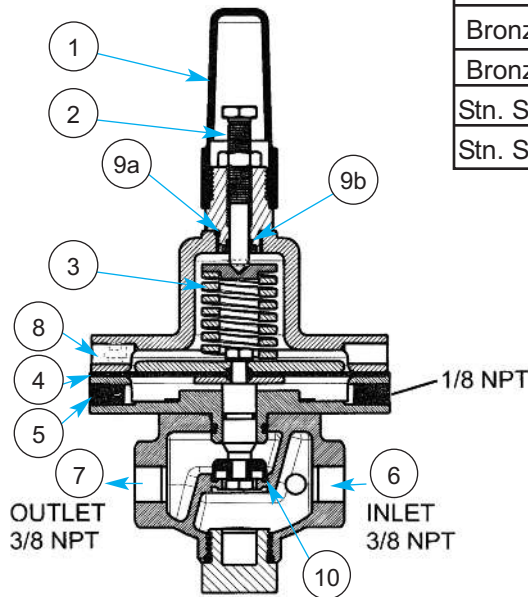
- Normally Closed, increasing pressure opens
- 1-15 psig spring range
- Large diaphragm area for low pressure sensitivity
- Can be local or remote sensed
- Simple adjustment
- All parts replaceable while mounted on valve
- Rubber to metal seat for positive shut-off
- Bronze or stainless steel construction

The Model 1330XS is a two-way, normally closed pilot, that senses minute pressure changes under its diaphragm and balances it against an adjustable spring load. An increase in pressure above the spring set point tends to make the pilot open.

The Model 1330XS is the standard pilot for OCV Series 108XS Pressure Relief/ Sustaining Valves. Sensing upstream pressure and opening at the set point, the pilot modulates the main valve to maintain the required pressure.

MODEL 1330XS MATRIX

MATERIAL	PART NUMBER	INLET/OUTLET (NPT)	USED ON VALVE SIZE
Bronze, Buna-N	230153	3/8	1 1/4"-6"
Bronze, Buna-N	230154	1/2	8"-16"
Stn. Steel, Buna-N	230735	3/8	1 1/4"-6"
Stn. Steel, Buna-N	230797	1/2	8"-16"



Model 1330XS
Pressure Relief
Pilot:

1. Adjusting Screw Cover
2. Adjusting Screw
3. Spring
4. Diaphragm
5. Pressure Sense
6. Pilot Inlet
7. Pilot Outlet
8. Vent Plug
9. O'Ring Adaptor Seals
10. Seat Disc

MATERIALS

Bronze ASTM B584-C89836
 Stainless Steel ASTM A743/CF8-M
 Elastomers (diaphragm, seat disc, o-rings)
 • Buna-N (Std.)
 • Viton® (Opt.) Viton is a registered trademark of DuPont Dow Elastomers
 • EPDM (Opt.)

SPRING RANGE

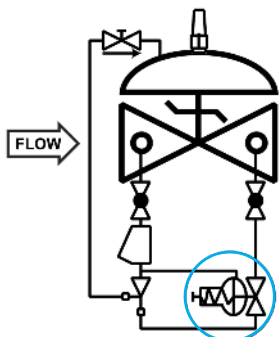
1-15 psig / 7-105 kPa

MAINTENANCE

Rubber components are typically the only parts that may require periodic replacement. These are available in kits consisting of the diaphragm, the seat disc and all O-rings.
 Buna-N Kit - Part # 930014
 Viton® Kit- Part # 930114
 EPDM Kit- Part # 930414

SCHEMATIC SYMBOL

The Model 1330XS is shown on OCV Valve Schematics as:



EXAMPLE: Shown here on a
 MODEL 108-2XS Pressure
 Relief/Sustaining Valve