



- Normally Open, increasing pressure closes
- Can be local or remote sensed
- All parts replaceable while mounted on valve

DESCRIPTION

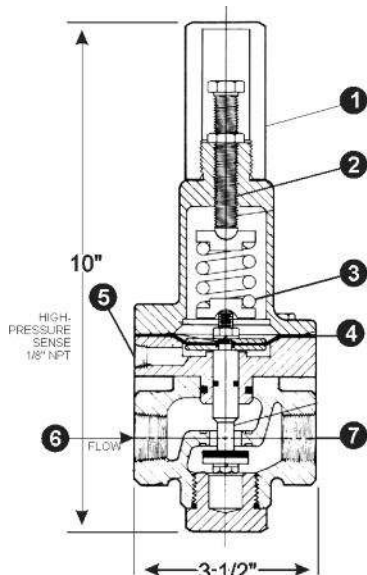
- Multiple spring ranges for accurate control
- Simple adjustment
- Rubber to metal seat for positive shut-off
- Bronze or stainless steel construction

The Model 1340 is a two-way, normally open pilot, that senses pressure under its diaphragm and balances it against an adjustable spring load. An increase in pressure above the spring set point tends to make the pilot close.

The Model 1340 is the standard pilot for OCV Series 127 Pressure Reducing Valves. Here it senses downstream pressure and modulates the main valve to maintain that pressure constant.

There are other applications for the Model 1340 as a normally open, pressure to close control.

MODEL 1340 MATRIX



MATERIAL	PART NUMBER	INLET/OUTLET (NPT)	USED ON VALVE SIZE
Bronze, Buna-N	230103	3/8	1 1/4"-6"
Bronze, Buna-N	230109	1/2	8"-16"
Stn. Steel, Buna-N	230703	3/8	1 1/4"-6"
Stn. Steel, Buna-N	230709	1/2	8"-16"

SPRING RANGES

PART NUMBER	COLOR	RANGE PSI	RANGE kPa
651701	Green	5 - 30	35 - 210
651703	Red (1 1/4" long)	20 - 80	140 - 560
651000	Red (2" long)	20 - 200	138 - 1379
651702	Blue	100 - 300	700 - 2100

Model 1340 Pressure Reducing Pilot:
 1. Adjusting Screw Cover
 2. Adjusting Screw
 3. Spring
 4. Diaphragm
 5. Pressure Sense
 6. Pilot Inlet
 7. Pilot Outlet

MATERIALS

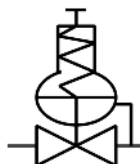
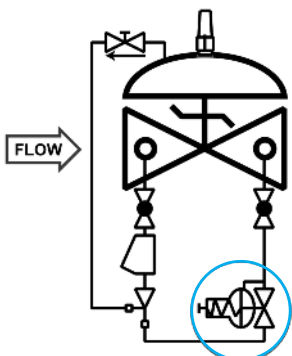
Bronze
 Stainless Steel
 Elastomers (diaphragm, seat disc, o-rings)
 • Buna-N (Std.)
 • Viton® (Opt.) Viton is a registered trademark of DuPont Dow Elastomers
 • EPDM (Opt.)

MAINTENANCE

Rubber components are typically the only parts that may require periodic replacement. These are available in kits consisting of the diaphragm, the seat disc and all O-rings.
 Buna-N Kit-Part # 930000
 Viton® Kit-Part # 930100
 EPDM Kit-Part # 930400

SCHEMATIC SYMBOL

The Model 1340 is shown on OCV Valve Schematics as:



EXAMPLE: Shown here on a MODEL 127-3 Pressure Reducing Valve.