

DESCRIPTION



EXTRA-SENSITIVE PRESSURE REDUCING PILOT

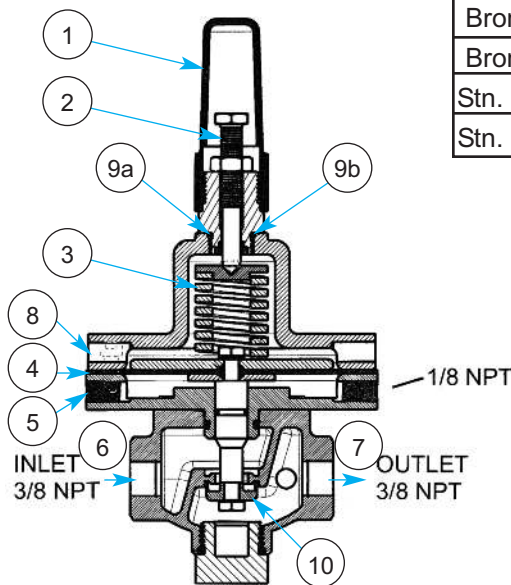
- Normally Open, increasing pressure closes
- 1-15 psig spring range
- Large diaphragm area for low pressure sensitivity
- Can be local or remote sensed
- Simple adjustment
- All parts replaceable while mounted on valve
- Rubber to metal seat for positive shut-off
- Bronze or stainless steel construction

The Model 1340XS is a two-way, normally open pilot, that senses minute pressure changes under its diaphragm and balances it against an adjustable spring load. An increase in pressure above the spring set point tends to make the pilot close.

The Model 1340XS is the standard pilot for OCV Series 127XS Pressure Reducing Valves. Sensing downstream pressure and closing at the set point, the pilot modulates the main valve to maintain the required pressure.

MODEL 1340XS MATRIX

MATERIAL	PART NUMBER	INLET/OUTLET (NPT)	USED ON VALVE SIZE
Bronze, Buna-N	230150	3/8	1 1/4"-6"
Bronze, Buna-N	230187	1/2	8"-16"
Stn. Steel, Buna-N	230789	3/8	1 1/4"-6"
Stn. Steel, Buna-N	230795	1/2	8"-16"



Model 1340XS
Pressure Reducing
Pilot:

1. Adjusting Screw
2. Cover
3. Adjusting Screw
4. Spring
5. Diaphragm
6. Pressure Sense
7. Pilot Inlet
8. Pilot Outlet
9. Vent Plug
10. O'Ring Adaptor
10. Seat Disc

MATERIALS

Bronze ASTM B584-C89836
 Stainless Steel ASTM A743/CF8-M
 Elastomers (diaphragm, seat disc, o-rings)
 ● Buna-N (Std.)
 ● Viton® (Opt.) Viton is a registered trade mark of DuPont Dow Elastomers
 ● EPDM (Opt.)

SPRING RANGE

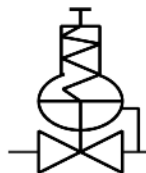
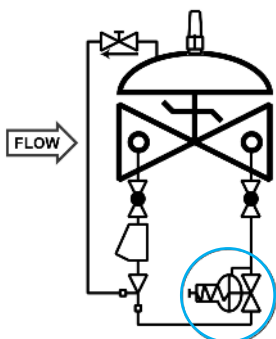
1-15 psig / 7-105 kPa

MAINTENANCE

Rubber components are typically the only parts that may require periodic replacement. These are available in kits consisting of the diaphragm, the seat disc and all O-rings.
 Buna-N Kit - Part # 930014
 Viton® Kit - Part # 930114
 EPDM Kit - Part # 930414

SCHEMATIC SYMBOL

The Model 1340XS is shown on OCV Valve Schematics as:



EXAMPLE: Shown here on a MODEL 127-3XS Pressure Reducing Valve.