

DESCRIPTION

MODEL 3600 3-WAY AUXILIARY PILOT

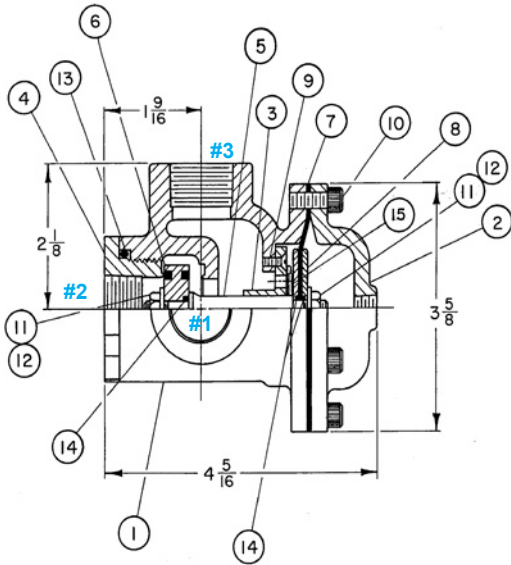
- Three port, two position, hydraulically operated
- 3/4" Ports
- 3600 - Actuated - Closes Main Valve
- All parts replaceable while mounted on valve
- Rubber to metal seat
- Bronze or stainless steel construction



The 3600 is an auxiliary pilot operated by a smaller ported control such as a float, altitude or solenoid pilot. Its purpose is to provide accelerated opening and closing action of the main valve. It is typically installed with its #3 port connected to main valve inlet, its #2 port connected to main valve outlet, and its #1 port connected to the main valve cover (bonnet). The pilot is shifted by the presence or absence of pressure on its diaphragm. It is used for straight on/off operation of the main valve.

Typical uses include: • Series 3330 Altitude Valve (10" & larger) • Series 8000 Float Valves (8" & larger)

MODEL 3600 MATRIX



OPERATION MATRIX

3600 COVER	PORTS CONNECTED	MAIN VALVE ACTION
Vented	#1 > #2	Opens
Pressurized	#3 > #1	Closes

MATERIAL	PART NUMBER	PORT SIZES NPT
Bronze, Buna-N	230142	3/4
Stn. Steel, Buna-N	230742	3/4

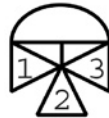
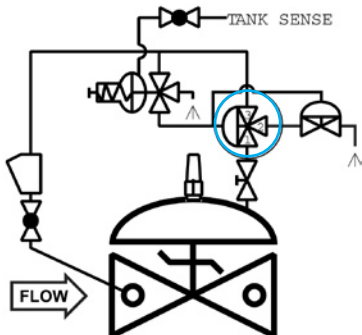
- Model 3600
3-Way Auxiliary Pilot:
1. Body
 2. Bonnet
 3. Guide Plate
 4. Adaptor
 5. Stem
 6. Seat Disc
 7. Diaphragm
 8. Diaphragm Plate
 9. Flat Head Screw
 10. Socket Hd Capscrew
 11. Hex Head Jam Nut
 12. Lockwasher
 13. O-ring
 14. O-ring
 15. Spring (optional)

MATERIALS

- Bronze B61
- Stainless Steel ASTM A743/CF8-M
- Elastomers (diaphragm, seat disc, o-rings)
 - Buna-N (Std.)
 - Viton® (Opt.) Viton is a registered trademark of DuPont Dow Elastomers
 - EPDM (Opt.)

SCHEMATIC SYMBOL

The Model 3600 is shown on OCV Valve Schematics as:



EXAMPLE: Shown here on a Model 3331, 10" and larger, One-way Flow Altitude Valve.

MAINTENANCE

Rubber components are typically the only parts that may require periodic replacement. These are available in kits consisting of the diaphragm, the seat disc and all O-rings. Kits are the same for both 3600 and 3600S

Buna-N Kit	-	Part # 930040
Viton® Kit	-	Part # 930140
EPDM Kit	-	Part # 930440

3-Way Auxiliary Pilot 3600