



DESCRIPTION

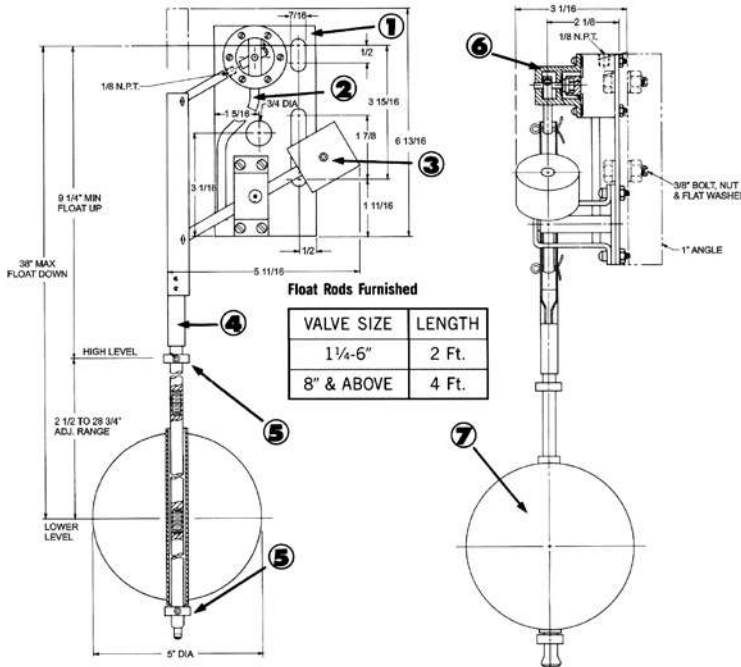
MODEL 814 ON/OFF FLOAT PILOT

- Three port, rotary disc design
- Can be valve-mounted or remote-mounted
- Adjustable drawdown between opening and closing points
- Counterweighted linkage allows for additional float rods

The 814 is a float-actuated, three-port pilot that controls the opening and closing of the main valve. The float rides freely on a vertical rod, with adjustable stop collars above and below. When the float reaches the upper stop, it moves the linkage up, rotating the pilot to close the main valve. When the float falls to the lower stop, it moves the linkage down, rotating the pilot to open the main valve. Between the two stops, the pilot, hence the main valve, remains in its last position.

The 814 pilot directly operates the main valve on sizes 1 1/4"-6". On valve sizes 8" and larger, the 814 operates an auxiliary 3-way pilot to control the main valve.

MODEL 814 MATRIX



OPERATION MATRIX

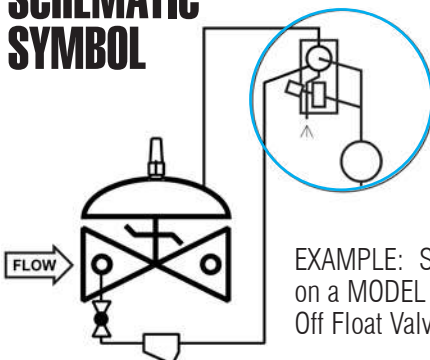
FLOAT POSITION	PORTS CONNECTED	MAIN VALVE ACTION
Up	Inlet > Common	Closes
Down	Common > Exhaust	Opens

MATERIAL	PART NUMBER	PORT SIZES NPT
Bronze, Buna-N	230110	1/8
Stn. Steel, Buna-N	230710	1/8

Model 814 On/Off Float Pilot:

1. Mounting Bracket
2. Exhaust
3. Counter Weight
4. Float Rod
5. Adjustable Stop Collars
6. Pilot Control
7. Float

SCHEMATIC SYMBOL



The Model 814 is shown on OCV Valve Schematics as:

EXAMPLE: Shown here on a MODEL 8000 On/Off Float Valve.

MATERIALS

Pilot: Bronze and Stainless Steel
 Float, Rods, and Linkage: Stainless Steel
 Elastomers (gasket, O-ring):

- Buna-N (Std.)
- Viton® (Opt.) Viton is a registered trademark of DuPont Dow Elastomers
- EPDM (Opt.)

On/Off Float Pilot 814