

DESCRIPTION



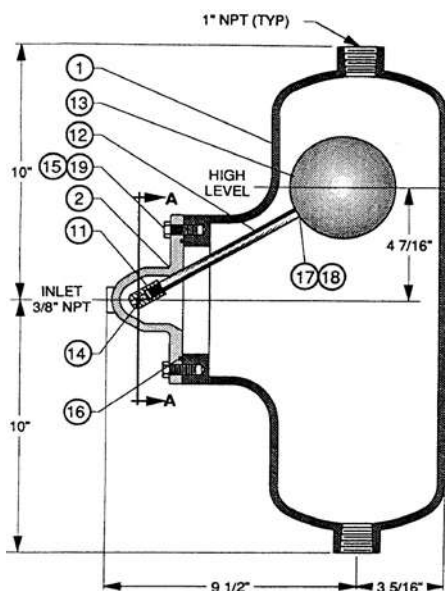
MODEL 815 CHAMBER MOUNTED FLOAT PILOT

- Two port, rotary disc design
- Remote mounted - Outside of Tank
- Float pilot can be removed from chamber for servicing
- Optional manual tester available

The Model 815 Float Pilot is two-way, rotary-disc control designed primarily for fuel service with floating roof tanks. It may also be used anywhere access to the tank interior is restricted or impossible. Suitable for both modulating and on-off service.

The 815 pilot operates the main valve directly on OCV Series 8103 Float Valves, and operates main valve through the 1356 Differential Pilot on OCV Series 8106 Float Valves.

MODEL 815 MATRIX



MATERIAL CHAMBER PILOT	PART NUMBER	PORT SIZE (NPT)
Steel / Bronze	230144	3/8
Stn. Steel	230762	3/8

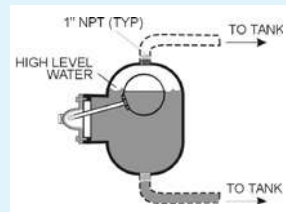
Buna-N elastomer in above part numbers.

Model 815 Chamber Mounted Float Pilot:

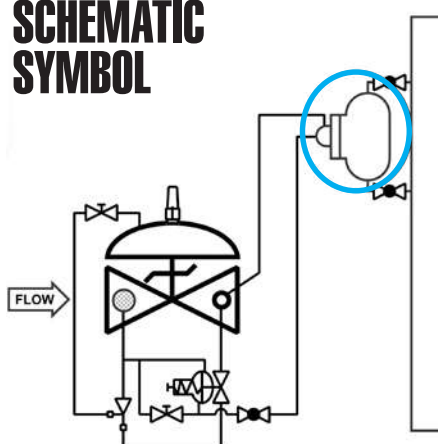
1. Chamber
2. Flange
3. Pilot Body
4. Pilot Disc
5. Arbor
6. Spring
7. Thrust Washer
8. O-Ring
9. Gasket
10. FL. HD. Screw
11. Float Arm Adaptor
12. Float Arm
13. Float
14. Flat HD. Screw
15. Hex HD. Capscrew
16. O-Ring
17. Stud
18. Lockwasher
19. Lockwasher
20. Manual Tester Assy. (OPT)

INSTALLATION

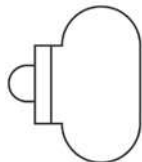
The 815 is installed outside the tank by piping the chamber's upper and lower 1" NPT ports into the tank wall, thus allowing the liquid level to enter the chamber. The customer-furnished supply piping from the main valve connects to the 3/8" NPT inlet port of the pilot. Minimum recommended size for this line is 1/2" OD tubing or 3/8" pipe. The 3/8" exhaust port is piped back to the discharge of the main valve.



SCHEMATIC SYMBOL



The Model 815 is shown on OCV Valve Schematics as:



EXAMPLE: Shown here on a MODEL 8106 High Level Shut-off Valve.

MATERIALS

- Body, disc, arbor: Type 303 Stainless Steel
- Pilot Flange: B61 Bronze or CF8-M Stainless Steel
- Chamber: Steel-epoxy coated or Stainless Steel
- Float: Type 304 Stainless Steel, 4" diameter
- Body gasket: Buna-N Std. Viton® Opt.