




DESCRIPTION

MODEL 812 MODULATING PILOT

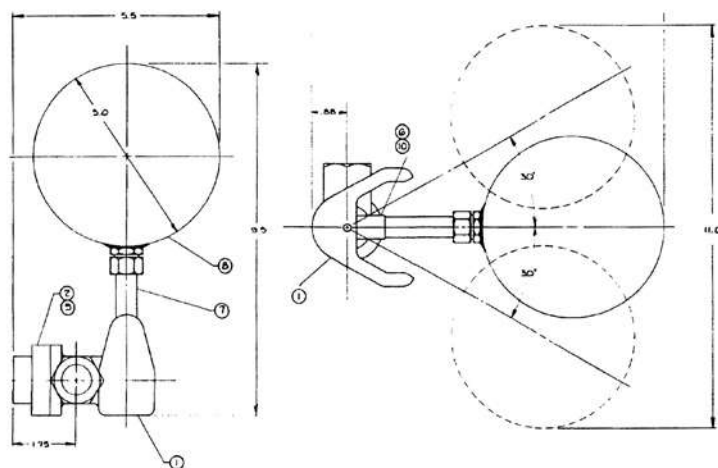
- Two port, rotary disc design
- Remote mounted
- Simple installation
- Optional manual tester available



The Model 812 Float Pilot is two-way, rotary-disc design suitable for both modulating and on-off service. In modulating service, the 812 can be configured for either flow into the tank (rising float closes main valve) or out of the tank (rising float opens main valve). In either, the valve maintains a constant level. Positive shut-off of the main valve is accomplished if the level raises the float to its highest position.

The 812 pilot operates the main valve directly on OCV Series 8101 and 8111 Float Valves, and operates main valve through the 1356 Differential Pilot on OCV Series 8104 and 8114 Float Valves.

MODEL 812 MATRIX



Model 812 Modulating Pilot:

1. Body
2. Bonnet
3. Spring

4. Disc
5. Arbor
6. Float Arm Adapter
7. Float Arm

8. Float
9. Screw, Filsiter Head
10. Screw, Flat Head
11. O-Ring

12. Washer, Thrust
13. Gasket

MATERIAL	PART NUMBER	PORT SIZE (NPT)
Bronze, Buna-N	230115	3/8
Stn. Steel, Buna-N	230715	3/8

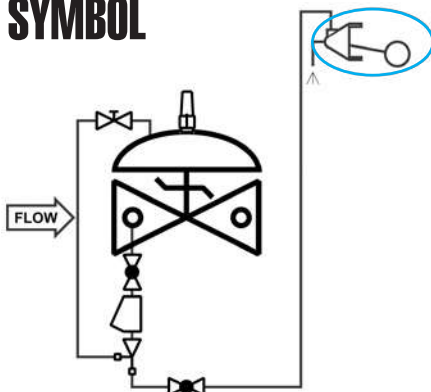
INSTALLATION

The 812 is easily installed in the tank. The supply piping from the main valve connected to the 3/8" NPT inlet port holds the pilot at the desired level. Minimum recommended size for this line is 1/2" OD tubing or 3/8" pipe. The 3/8" exhaust port may be left open to flow into the tank, or piped back to the discharge of the main valve. The latter should be done to avoid cross-connection or with flammable liquids.

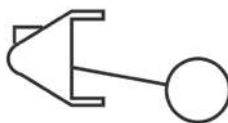
MATERIALS

- Body, disc, arbor: Type 303 Stainless Steel
- Bonnet: B61 Bronze (standard), CF8-M Stainless Steel (optional)
- Float: Type 304 Stainless Steel, 5" diameter
- Body gasket: Buna-N standard, Viton®. EPDM optional

SCHEMATIC SYMBOL



The Model 812 is shown on OCV Valve Schematics as:



EXAMPLE: Shown here on a MODEL 8101 Modulating Float Valve.