



DESCRIPTION

MODEL 2400 PRESSURE RELIEF PILOT / N.C. (High Pressure Type)

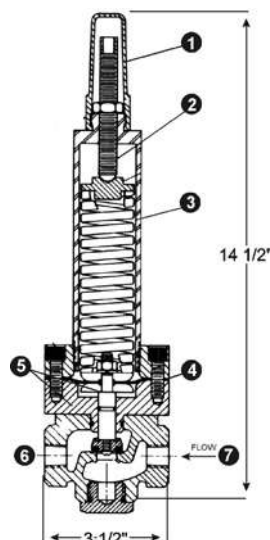
- Normally Closed, increasing pressure opens
- Can be local or remote sensed
- All parts replaceable while mounted on valve
- Rubber to metal seat for positive shut-off
- Simple adjustment
- 200-750 psig spring range
- Stainless steel construction

The Model 2400 is a two-way, normally closed pilot that senses pressure under its diaphragm and balances it against an adjustable spring load. An increase in pressure above the spring set point tends to make the pilot open.

The Model 2400 is the standard pilot for OCV Series 108HP Pressure Relief/ Sustaining Valves. Sensing upstream pressure and opening at the set point, it modulates the main valve to maintain the required pressure.

There are other applications for the Model 2400 as a normally closed, pressure to open control.

MODEL 2400 MATRIX



Model 2400 Pressure Relief Pilot:

1. Adjusting Screw Cover
2. Adjusting Screw
3. Spring
4. Diaphragm
5. Pressure Sense
6. Pilot Outlet
7. Pilot Inlet

MATERIAL	PART NUMBER	INLET/OUTLET (NPT)	USED ON VALVE SIZE
Stn. Steel, Buna-N	230706	3/8	1 1/4"-6"
Stn. Steel, Buna-N	230757	1/2	8"-16"

MATERIALS

Stainless Steel ASTM A743/CF8-M
Elastomers (diaphragm, seat disc, o-rings)

- Buna-N (Std.)
- Viton® (Opt.) Viton is a registered trade mark of DuPont Dow Elastomers
- EPDM (Opt.)

SPRING RANGES

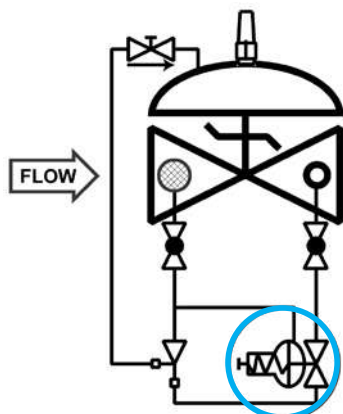
200 - 750 psig / 1380 - 5170 kPa

MAINTENANCE

Rubber components are typically the only parts that may require periodic replacement.
These are available in kits consisting of the diaphragm, the seat disc and all O-rings.
Buna-N Kit-Part # 930016
Viton® Kit-Consult Factory
EPDM Kit-Consult Factory

SCHEMATIC SYMBOL

The Model 2400 is shown on OCV Valve Schematics as:



EXAMPLE: Shown here on a MODEL 108-2HP High Pressure Relief / Sustaining Valve.