

DESCRIPTION

MODEL THREE-WAY SOLENOID

- Provides On/Off (Open/Close) control of main valve.
- Interfaces valve operation with timer, relays, probes, etc.
- Manual Override operation available.
- Available in weatherproof or explosion-proof enclosures.
- Wide range of voltages in AC / DC.
- Available energize to open or energize to close.
- Brass or stainless steel bodies available.



MODEL SHOWN:
ASCO 8320A170

The three-way solenoid is a valve that opens and closes flow depending upon the electrical state of the coil. It maybe used directly on smaller valves (e.g. OCV Model 115-1), or in conjunction with a high-capacity auxiliary pilot to make larger valves operate faster (e.g. OCV Model 115-4).

AVAILABLE VOLTAGES

AC, 60Hz.:	24, 120, 240, 480 Volts
AC, 50Hz.:	110, 220, 440, Volts
DC:	6, 12, 24, 125, 240 Volts

ENCLOSURES

General Purpose NEMA 1, 2, 3, 3S, 4, 4X
Explosion Proof NEMA 1, 2, 3, 3S, 4, 4X, 6, 6P, 7, 9



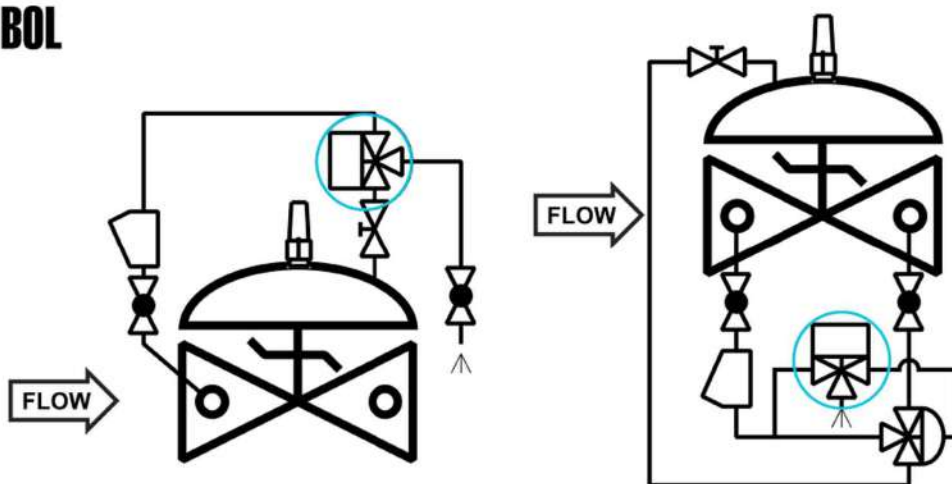
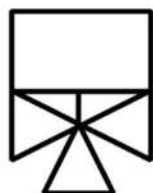
MODEL SHOWN:
BURKERT 330C

Note:
Specifications stated subject to change depending on solenoid selected per application. Consult factory.

Information Required:
Voltage, actuation (energize to open or close), enclosure, working pressure, control fluid, valve function and size.

SCHEMATIC SYMBOL

The three-way solenoid is shown on OCV Valve Schematic as:



EXAMPLE: Shown here on a:

Model 115-1 Solenoid Valve

Model 115-4 High Capacity Solenoid Valve

TOLL FREE 1.888.628.8258 • phone: (918)627.1942 • fax: (918)622.8916 • 7400 East 42nd Place, Tulsa, OK 74145
email: sales@controlvalves.com • website: www.controlvalves.com