



DESCRIPTION

MODEL 2490 PRESSURE REDUCING PILOT

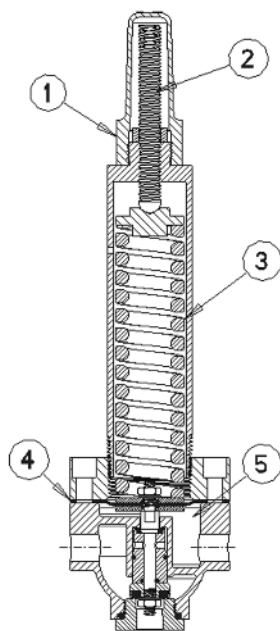
- Normally Open, increasing pressure closes
- 110-440 psi spring range for accurate control
- Internally sensed
- Simple adjustment

- All parts replaceable while mounted on valve
- Rubber to metal seat for positive shut-off
- Stainless Steel construction
- Water service only

The Model 2490 is a three-way, normally open pilot, that senses pressure under its diaphragm and balances it against an adjustable spring load. An increase in pressure above the spring set point moves the pilot to cause the main valve to close.

The Model 2490 is the standard pilot for OCV Series 129HP Pressure Reducing Valves. It senses downstream pressure and modulates the main valve to maintain that pressure is constant.

MODEL 2490 MATRIX



MATERIAL	PART NUMBER	INLET/OUTLET (NPT)	USED ON VALVE SIZE
Stn. Steel, Buna-N	230895	3/8	1 1/4"-16"

SPRING RANGE

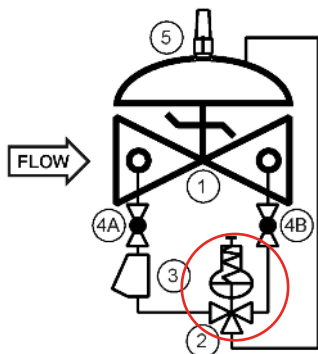
PART NUMBER	COLOR	RANGE PSI	RANGE kPa
651400	GREEN	32 - 125	221 - 862
651412	BLUE	52 - 205	359 - 1413
651413	RED	92 - 365	634 - 2517
651001	YELLOW*	110 - 440	758 - 3034

*Standard

Model 2490 Pressure Reducing Pilot:
 1. Adjusting Screw Cover
 2. Adjusting Screw
 3. Spring
 4. Diaphragm
 5. Pressure Sense (Internal)

SCHEMATIC SYMBOL

The Model 2490 is shown on OCV Valve Schematics as:



EXAMPLE: Shown here on a MODEL 129HP Pressure Reducing Valve.

MATERIALS

Stainless Steel
 Elastomers (diaphragm, seat disc, o-rings)
 • Buna-N (Std.)
 • Viton® (Opt.) Viton is a registered trademark of DuPont Dow Elastomers
 • EPDM (Opt.)

MAINTENANCE

Rubber components are typically the only parts that may require periodic replacement. These are available in kits consisting of the diaphragm, the seat disc and all O-rings.

Buna-N Kit - Part # 930090
 Viton® Kit - Consult Factory
 EPDM Kit - Consult Factory