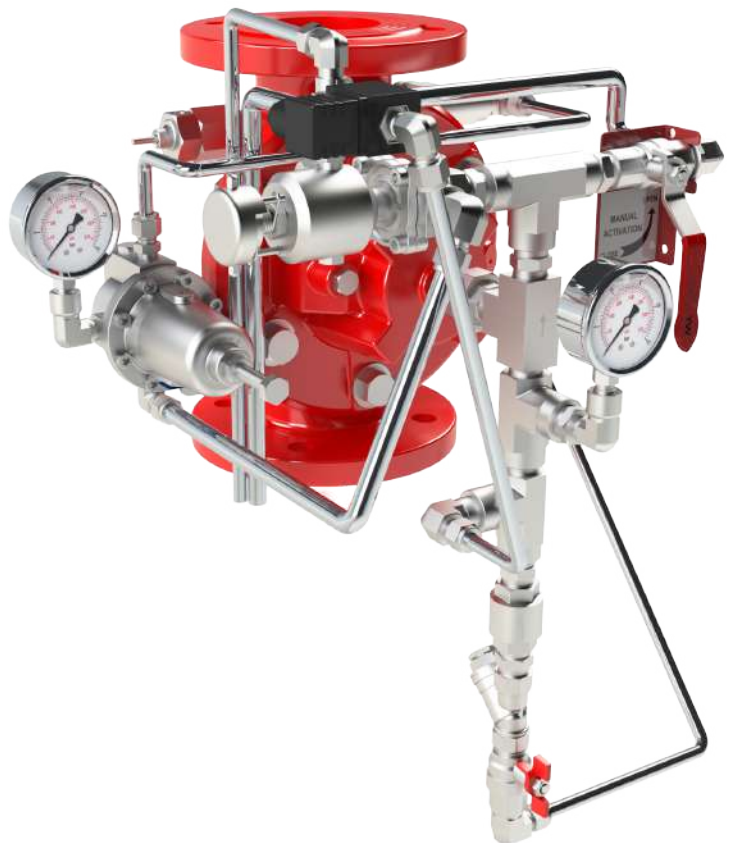


Advanced Hydraulic 
Solutions for Optimal
Management of
Fire Protection Systems

 **OCV**
FIRE PROTECTION VALVES



 **Aquestia** USA
Directing the Flow

DELUGE

OCV DE\HM

Hydraulically Actuated
Deluge Valve



OCV DE\HRV

Hydraulically Actuated,
Anti-Columning
Deluge Valve



OCV DE\PORV

Pneumatically Actuated
Deluge Valve



OCV DE\RC

Electrically Actuated,
Remote Reset
Deluge Valve
3/2 Solenoid



OCV DE\RCL

Electrically Actuated,
Manual Reset
Deluge Valve



OCV DE\EL\HRV

Electrically or
Hydraulically Actuated,
Anti-Columning
Deluge Valve



OCV DE\EL\PORV

Electrically or
Pneumatically Actuated
Deluge Valve



PRE-ACTION

OCV DE\EL\PORV-DN

Double-Interlock
Pre-Action,
Electro-Pneumatic
Release System



OCV DE\EL\PORV\PR-DN

Double-Interlock
Pre-Action,
Pressure Reducing,
Electro-Pneumatic
Release System



PRESSURE REDUCING & PRESSURE RELIEF

OCV 129FC

Pressure Reducing Valve



OCV PR\UL

Pressure Reducing Valve
(Model 30)



OCV PS\UL

Pressure Relief Valve
(Model 30)



OCV 108FC (Globe)/ 108FCA (Angle)

Fire Pump Relief Valve



OCV 108FPS

Pump Suction Control Valve



DELUGE PRESSURE REDUCING

OCV DE\HRV\PR

Hydraulically Actuated,
Anti-Columning,
Pressure Reducing Deluge Valve



OCV DE\HRV\PR-MR

Hydraulically Actuated
Anti-Columning,
Pressure Reducing,
Manual Reset Deluge Valve



OCV DE\PORV\PR

Pneumatically Actuated,
Pressure Reducing
Deluge Valve



OCV DE\PORV\PR-MR

Pneumatically Actuated,
Pressure Reducing,
Manual Reset Deluge Valve



OCV DE\RC\PR

Electrically Actuated,
Pressure Reducing,
Remote Reset Deluge Valve
3/2 Solenoid



OCV DE\RCL\PR

Electrically Actuated,
Pressure Reducing,
Manual Reset Deluge Valve
3/2 Solenoid



OCV DE\EL\HRV\PR

Electrically or
Hydraulically Actuated,
Anti-Columning, Pressure Reducing
Deluge Valve



OCV DE\EL\HRV\PR-MR

Electrically or
Hydraulically Actuated,
Anti-Columning,
Pressure Reducing,
Manual Reset Deluge Valve



DE\EL\PORV\PR

Electrically or
Pneumatically Actuated,
Pressure Reducing
Deluge Valve



OCV DE\EL\PORV\PR-MR

Electrically or
Pneumatically Actuated,
Pressure Reducing,
Manual Reset Deluge Valve



FOAM

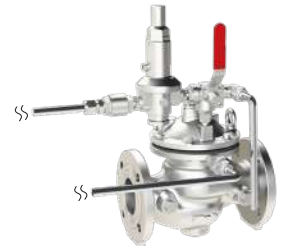
OCV ZP\EL

Foam Concentrate,
Electrically Actuated
Control Valve



OCV ZP\HM

Foam Concentrate,
Hydraulic Pilot Actuated
Control Valve



OCV ZP\H

Foam Concentrate,
Hydraulically Actuated
Control Valve





Directing the Flow



Advanced hydraulic solutions for optimal management of liquid conveyance systems. Aquestia is a world leader in providing optimal solutions for surge protection, water loss reduction and pressure management, by integrating uniquely developed products with innovatively designed software.

Aquestia brings together three strong brands - A.R.I., Dorot and OCV - combining decades of experience, a wealth of knowledge and expertise, and a wide range of solutions and services. Aquestia is where liquid flows - Fire Protection, Aviation Fueling, Oil and Gas, Waterworks & Wastewater Systems, Irrigation, Mining, Ballast Water & Desalination, and Commercial Plumbing.

Aquestia - high-quality, reliable products and committed service - for your peace of mind.

FIRE PROTECTION VALVES

Hydraulically operated, diaphragm actuated and manufactured in sizes 1/2" to 40" in both globe and angle designs. UL Listed designs available 1/2" to 12".

Reliable and comprehensive solutions for the most demanding fire protection applications such as tunnels, storage, hangars & terminals, high-rise buildings, and more.

Utilized in hazardous offshore and onshore locations, and/or corrosive environments such as refineries, offshore platforms, power generation plants, etc., as well as applications in extreme climates.

Readily adaptable to perform numerous functions including pneumatic, electric and hydraulic deluge, pressure control, pressure relief, thermal expansion relief, automatic level control, and more. Custom solutions can be designed and engineered for more challenging applications.

Manufactured in a variety of materials such as Nickel-Aluminum-Bronze, Stainless Steel, Super Duplex, Bronze, Cast Steel and Ductile Iron. Valves can be specially finished with a seawater coating and/or a high built, fusion bonded epoxy with a protective topcoat for those highly corrosive environments.



Joan Manuel Diaz

Business Development Manager,
Industrial Markets
Mobile: +1-713-657-9187
joan.manuel@aquestia.com

Aquestia USA

7400 East 42nd Place | Tulsa, Oklahoma, USA 74145
Toll Free: 1-888-OCV-VALV (628-8258)
Phone: 918-627-1942 | Fax: 918-622-8916
usa@aquestia.com

