

OCV Model 127-9S

Truck/Rail Car Loading & Unloading Systems

Aquestia
Directing the Flow



General representation



Fueling



Terminal
Services

Two-Stage Preset Valve

Description

The two-stage preset valve shall open in one stage and close in two stages based on signals from the preset register. The OCV 127-9S is specifically designed for fuel loading systems and performs the following functions:

- Electrical opening – full flow delivery
- Pressure Reducing – valve will control downstream (delivery) pressure at a predetermined point during high flow filling process
- Two-Stage shutdown

Features & Benefits

- Opens on signal from preset register
- Can be controlled by mechanical or electronic presets
- Adjustable flow setting for 2nd stage dwell
- Factory tested
- Junction box options are available, with explosion proof ratings
- Two-stage electronic opening options are available
- Standard Class 1 Div 1 (Optional Class I Div 2, ATEX, IECEx)

Certification & Compliance

NSF-ISO Quality System (9001)



ABS Type Approval



Technical Standards & Safety Authority



American-Made: American Recovery & Reinvestment



Pressure Equipment Directive Certified 2014/68/EU



CE (Conformité Européenne) Compliance



Typical Applications

Metering Systems



Loading Terminals



Storage Tanks



Truck/Rail Car Loading & Unloading Systems



Operation

The OCV 127-9S control valve opens to fill the system at a high flow rate while maintaining a constant downstream pressure. Near the end of the load, the valve rapidly closes down in 2 stages to top off the reservoir:

Opening, Full Flow: The main valve (1) opens to supply a constant pressure when the preset controller energizes the solenoid (2). The pressure reducing pilot (4), sensing downstream pressure, will modulate the main valve to prevent the downstream pressure from exceeding the predetermined maximum. The needle valve (5) is adjusted for optimum performance of the pilot (4).

HI output applies power and opens the N.C. solenoid, activating flow control function.

1st Stage Shutdown: The main valve begins closing at a predetermined number of gallons before the end of the load.

HI output removes power and closes the N.C. solenoid. HI output remains off through load.

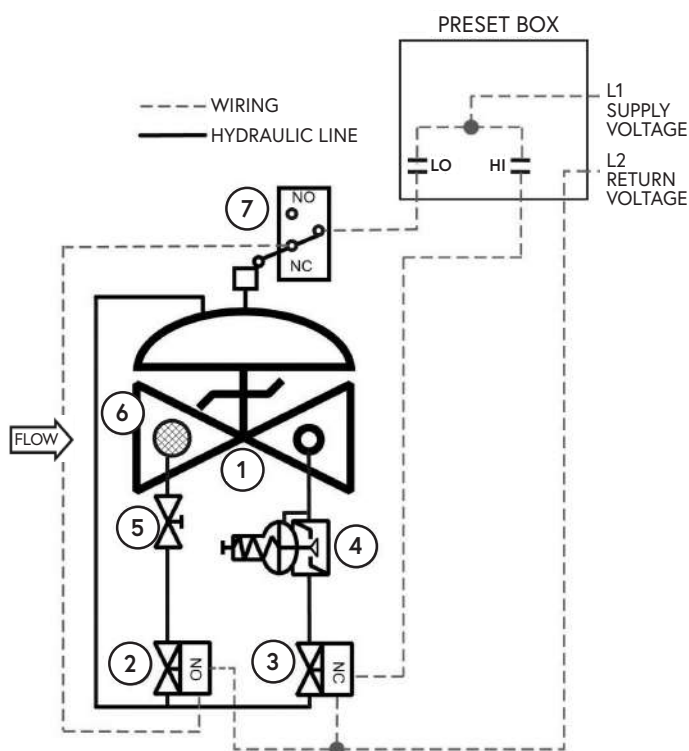
LO output sends power to the limit switch. The N.O. solenoid remains open (de-energized) because limit switch contact is open.

Low (Dwell) Flow: The main valve closes far enough to trip the limit switch contact and holds this position for low flow filling.

LO output sends power through limit switch contact and closes the N.O. solenoid. This hydraulically locks the valve into a low flow mode.

Final Closure: The main valve will close fully when the load is complete.

LO output removes power from the limit switch and N.O. solenoid. The N.O. solenoid opens and allows the main valve to close fully.



Components

The OCV 127-9S consists of the following components, arranged as shown on the schematic diagram:

- | | | |
|--------------------------------------|--------------------------------------|-----------------------------------|
| 1 Model 65 Basic Valve (fail closed) | 3 Two-Way Solenoid Pilot, N.C. | 5 Needle Valve (closing speed) |
| 2 Two-Way Solenoid Pilot, N.O. | 4 Model 1340 Pressure Reducing Pilot | 6 Inline Strainer |
| | | 7 Limit Switch (low flow setting) |

Pressure Table

End Connections	Ductile Iron	STEEL/SST	STEEL LCB	STEEL WCB	Aluminum
Standard (Maximum Working Pressures at 100°F)					
Screwed	640 psi	640 psi	--	--	285 psi
Grooved	300 psi	300 psi	--	--	200 psi
150# Flanged	250 psi	285 psi	--	--	285 psi
300# Flanged	640 psi	740 psi	--	--	--
Metric (Maximum Working Pressures at 37.78°C)					
Screwed	44.1 bar	44.1 bar	44.1 bar	44.1 bar	19.7 bar
Grooved	20.7 bar	20.7 bar	20.7 bar	20.7 bar	13.8 bar
150# Flanged	17.2 bar	19.0 bar	18.4 bar	19.7 bar	19.7 bar
300# Flanged	44.1 bar	49.6 bar	48.0 bar	51.0 bar	--

Based on ANSI flange ratings.

Flow Chart

Standard Size Max. Flow (GPM)	1 1/4"	1 1/2"	2"	2 1/2"	3"	4"	6"	8"	10"	12"	14"	16"	18"	20"	24"
7.5 FT/SEC (Military)	40	50	80	120	180	300	680	1200	1850	2650	3200	4150	5250	6550	9400
15 FT/SEC (Max. Recommended)	70	100	160	230	350	600	1350	2350	3700	5250	6350	8300	10500	13100	18800
20 FT/SEC (Max. Continuous)	100	130	210	300	470	800	1800	3150	4950	7000	8450	11100	14000	17400	25100
Metric Size Max. Flow (m ³ /hr)	DN32	DN40	DN50	DN65	DN80	DN100	DN150	DN200	DN250	DN300	DN350	DN400	DN450	DN500	DN600
2.29 M/SEC (Military)	9	11	18	27	41	68	154	272	420	602	726	942	1192	1487	2134
4.57 M/SEC (Max. Recommended)	16	23	36	52	79	136	306	533	840	1192	1441	1884	2384	2974	4268
6.10 M/SEC (Max. Continuous)	23	30	48	68	107	182	409	715	1124	1589	1918	2520	3178	3950	5698

The OCV 127-9S is normally sized to match the meter size; however, in no case should the maximum velocity exceed 20 ft/sec (metric: 6.10 meters/sec).

Resetting, maintenance and periodic testing instructions must be followed as described in detail in the applicable OCV IOM (Installation, Operation & Maintenance) Manual.

Typical Materials

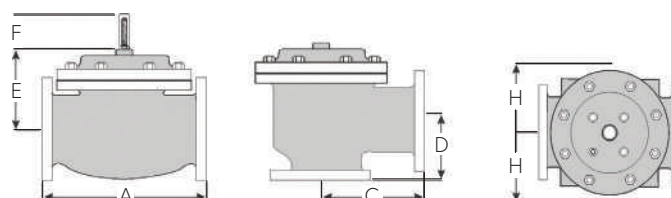
Part	Standard Material
Body/Bonnet	Ductile Iron (epoxy coated), Carbon Steel (epoxy coated), Stainless Steel, Aluminum
Seat Ring	Stainless Steel, Bronze
Stem	Stainless Steel, Monel
Spring	Stainless Steel
Diaphragm	Buna-N, Viton (Nylon reinforced)
Seat Disc	Buna-N, Viton
Pilot	Stainless Steel, Bronze
Other Pilot System Components	Stainless Steel, Bronze/Brass
Tubing & Fittings	Stainless Steel, Copper/Brass

General Arrangement & Dimensions

Standard Sizes													
DIM	END CONN.	1 1/4" - 1 1/2"	2"	2 1/2"	3"	4"	6"	8"	10"	12"	14"	16"	24"
A	SCREWED	8 3/4	9 7/8	10 1/2	13	---	---	---	---	---	---	---	---
	GROOVED	8 3/4	9 7/8	10 1/2	13	15 1/4	20	---	---	---	---	---	---
	150# FLGD	8 1/2	9 3/8	10 1/2	12	15	17 3/4	25 3/8	29 3/4	34	39	40 3/8	62
	300# FLGD	8 3/4	9 7/8	11 1/8	12 3/4	15 5/8	18 5/8	26 3/8	31 1/8	35 1/2	40 1/2	42	63 3/4
C ANGLE	SCREWED	4 3/8	4 3/4	6	6 1/2	---	---	---	---	---	---	---	---
	GROOVED	4 3/8*	4 3/4	6	6 1/2	7 5/8	---	---	---	---	---	---	---
	150# FLGD	4 1/4	4 3/4	6	6	7 1/2	10	12 11/16	14 7/8	17	---	20 13/16	---
	300# FLGD	4 3/8	5	6 3/8	6 3/8	7 13/16	10 1/2	13 3/16	15 9/16	17 3/4	---	21 5/8	---
D ANGLE	SCREWED	3 1/8	3 7/8	4	4 1/2	---	---	---	---	---	---	---	---
	GROOVED	3 1/8*	3 7/8	4	4 1/2	5 5/8	---	---	---	---	---	---	---
	150# FLGD	3	3 7/8	4	4	5 1/2	6	8	11 3/8	11	---	15 11/16	---
	300# FLGD	3 1/8	4 1/8	4 3/8	4 3/8	5 13/16	6 1/2	8 1/2	12 1/16	11 3/4	---	16 1/2	---
E	ALL	6	6	7	6 1/2	8	10	11 7/8	15 3/8	17	18	19	27
F (OPT)	ALL	3 7/8	3 7/8	3 7/8	3 7/8	3 7/8	3 7/8	6 3/8	6 3/8	6 3/8	6 3/8	6 3/8	8
H	ALL	10	11	11	11	12	13	14	17	18	20	20	28 1/2

Metric Sizes													
DIM	END CONN.	DN32-40	DN50	DN65	DN80	DN100	DN150	DN200	DN250	DN300	DN350	DN400	DN600
A	SCREWED	222	251	267	330	---	---	---	---	---	---	---	---
	GROOVED	222	251	267	330	387	508	---	---	---	---	---	---
	150# FLGD	216	238	267	305	381	451	645	756	863	991	1026	1575
	300# FLGD	222	251	283	324	397	473	670	791	902	1029	1067	1619
C ANGLE	SCREWED	111	121	152	165	---	---	---	---	---	---	---	---
	GROOVED	111*	121	152	165	194	---	---	---	---	---	---	---
	150# FLGD	108	121	152	152	191	254	322	378	432	---	529	---
	300# FLGD	111	127	162	162	198	267	335	395	451	---	549	---
D ANGLE	SCREWED	79	98	102	114	---	---	---	---	---	---	---	---
	GROOVED	79*	98	102	114	143	---	---	---	---	---	---	---
	150# FLGD	76	98	102	102	140	152	203	289	279	---	398	---
	300# FLGD	79	105	111	111	148	165	216	306	298	---	419	---
E	ALL	152	152	178	165	203	254	302	391	432	457	483	686
F (OPT)	ALL	98	98	98	98	98	98	162	162	162	162	162	203
H	ALL	254	279	279	279	305	330	356	432	457	508	508	724

*Grooved End not available in 1 1/4" (DN32).



Technical Data

Temperature (Elastomers)	
Buna-N	-40°F to 180°F
Viton	20°F to 230°F
Fluorosilicone	-40°F to 150°F
EPDM	0°F to 230°F
Sizes	
Screwed Ends	1-1/4" - 3"
Grooved Ends	1-1/2" - 6" (globe & angle)
Flanged Ends	1-1/4" - 24" (globe); 1-1/4" - 16" (angle)
Pressure Rating (ANSI at 100°F)	
250psi for Class 150# ANSI Flanged Ductile Iron	
285psi for Steel/Stainless Steel & Aluminum	
300# ANSI Flanges are available	
Solenoid Voltage	
Enclosure	Explosion Proof NEMA 4X, 6P, 7, 9 Class I, Div I (standard) Class I, Div 2 - ATEX, IECEX (opt)
Body	Brass, Stainless Steel
Voltages	24, 120, 240, 480 VAC; 12, 24 VDC

Body & Cover Material	
Ductile Iron	
Carbon Steel	
Stainless Steel	
Aluminum	
Trim Material	
Bronze/Brass	
Stainless Steel	
Copper	
Optional Components	
Two-Stage Opening	
Visual Indicator	
Pre-Wired Junction Box	
Items to Specify	
Fluid Type	
Model Number	
Size	
Body & Trim Material	
Solenoid Voltage	
Globe or Angle	
Special Installation Requirements	

Engineering Specifications

The two-stage preset valve shall be a single-seated, line pressure operated, diaphragm actuated, pilot controlled globe valve. The valve shall seal by means of a corrosion-resistant seat and a resilient, rectangular seat disc. These, and other parts, shall be replaceable without removing the valve from the line. The stem of the main valve shall be guided top and bottom by integral bushings. Alignment of the body, bonnet and diaphragm assembly shall be by precision dowel pins. The diaphragm shall not be used as a seating surface, nor shall the pistons be used as an operating means. The pilot system shall be furnished complete, installed on the main valve and include two solenoid pilots, a needle valve and an inline strainer. The two-stage preset valve shall be operationally and hydrostatically tested

prior to shipment. The main valve body and bonnet shall be ductile iron. All ferrous surfaces shall be coated with 4 mils of epoxy. The main valve seat ring shall be stainless steel. Elastomers (diaphragms, resilient seats and o-rings) shall be Buna-N. Solenoid pilots shall be stainless steel, as shall the needle valve and control line tubing. The solenoid and limit switch enclosure shall be explosion-proof and suitable for operation on <voltage> (see Technical Data section). The two-stage preset valve shall be suitable for operation at <X> psi (see Pressure Table) at flow rates up to <X> gpm (see Flow Chart). The two-stage preset valve shall be an OCV 127-9S, as manufactured by OCV, Tulsa, OK, USA.